

Wisconsin Gardens



in this issue:

Our President's Words	2
President's Project Update	3
News from Clubs, Districts	6-8
Horticulture	9
Book Review	16
ByLaws Recommendations and Standing Rules Changes	17-22
Dates to Remember	23

Looking Ahead to 2016 WGCFF Convention.....

“Step Into Spring”

May 15-17

Osthoff Resort, Elkhart Lake

Doris Weber

If you haven't already done so, it's time to register for the 2016 State Convention to be held at the Osthoff Resort in Elkhart Lake, May 15–17. Many educational sessions are being featured including the four breakouts held on Monday after lunch. Don't miss the accomplished floral designer creating, with each attendee, a floral arrangement and also a fun, fabulous, funky, unusual container by a designer to both be taken home by the attendees. Other breakouts include top-notch speakers on vegetable production, GMO's, heirlooms, and reducing, reusing, recycling and adding the use of vinegar in your everyday life.

We remind all District Directors and any clubs to bring your “Tisket-a-Tasket” baskets to the Convention. Please email doris@johngweber.com if you are able to bring a basket. We also need your gently used or unwanted shoes, boots, etc. for our “first ever” shoe drive. We would like to fill 100 bags with 25 pairs of shoes in each bag totaling 2,500 pairs of shoes needed. That will net member services \$1,000! Wow! More pairs means more money! The shoe drive will take any size shoe from infant to size 15!

After our two noon luncheons and speakers, we will have our famous live auctioneer and auction as previewed at last year's Convention. We need attendees to bring auction items along to the Convention. Needed are good as new, slightly used or items suitable and somewhat garden-related for this live auction.

Our vendors at this Convention will feature: teapot birdhouses, golf ball butterflies, photo note and greeting cards, hostas, perennials and annuals, 3-D dragonflies, glass bird baths, game piece jewelry (one of a kind) ceramic wall sculpture featuring WI botanicals, and children's books, all handmade items done by the vendor.

The Sheboygan District hopes you will all gather in Elkhart Lake at the “Osthoff” for a memorable State Convention and join us for a fun-filled time reuniting with members from around the state as we “STEP INTO SPRING”.

Sharing Your Knowledge

Mary Kulhanek

There is still time to volunteer to share your knowledge with others at the 2016 Convention!! Please contact me at marykulhanek@sbcglobal.net or 920-452-7591 to plan your 15 minute demonstration around your convention schedule. We have several interesting presentations planned but have room for YOU too!!

(Additional Convention information on page 5)



Gardening Thoughts

*“I love spring anywhere,
but if I could choose,
I would always greet it in
a garden.”*

—Ruth Stout



WGCF is a not-for-profit educational organization founded in 1928. It is a member of National Garden Clubs, Inc.

MISSION: WGCF PROVIDES EDUCATION, RESOURCES AND OPPORTUNITIES FOR ITS MEMBERS TO PROMOTE AND SHARE THE LOVE OF GARDENING, FLORAL DESIGN, CIVIC AND ENVIRONMENTAL RESPONSIBILITY.

WGCF 2015-2017 OFFICERS:

President: Gerianne Holzman
 7437 Terrace Ave.
 Middleton, WI 53562
 608-345-6907
 geriannewgcf@gmail.com

First Vice President: Peggy Grubbs
 2350 80th St.
 New Richmond, WI 54017
 715-248-3943
 peggymcgrubbs@aol.com

Recording Secretary: Diane Olsen
 4838 North 71st Street
 Milwaukee, WI 53218-2513
 414-578-2513
 gunga_din13@hotmail.com

Membership Secretary:
Maureen Wild-Gordon
 742 Oak Ridge Rd.
 Oregon, WI 53575
 608-287-6501
 wildgordon@prontomail.com

WGCF Treasurer: Lynnette Rakun
 6622 CTH V
 Sheboygan Falls, WI 53085
 920-946-1673
 lmrakun@live.com

Central Region Director: Judy Newman
 N49 W18935 Joetta Drive
 Menomonee Falls, WI53051
 414-861-7134
 newman9641@aol.com

NGC President: Sandra Robinson
 London, Kentucky
 sandyr5342@gmail.com
NGC Headquarters:
 4401 Magnolia Avenue
 St. Louis, MO 63110
 www.gardenclub.org

Words from our President....

Gardens and memories go hand in hand. In preparation for being part of the Madison District’s garden tour, Rob and I are making plans for garden additions and changes including a long desired fire pit, a raised veggie bed and a bottle tree created from a huge fallen branch. As we toured the gardens in the beautiful weather of the end of February, we recalled the many people that “live” in our garden. Plants from grandmother, parents, siblings, friends, neighbors and area garden clubs abound and flourish here. We may not remember the exact variety of a plant but we know who gave it to us. Do you have special memories “living” in your garden? Please like WGCF on Facebook and share your memories.



New memories will come to us with spring and another gardening season. Before the height of the season, we had the great opportunity to build friendships and memories with our Gardening Study School in Appleton. To build interest in our schools, we gave away a free registration during a drawing at a WGCF co-sponsored Community Gardens Summit in Madison. The recipient was thrilled to receive this opportunity and is interested in a garden club in her area. We also collected names of potential members at this event and at Garden Expo. Our publicity/marketing group will explore other occasions for WGCF sponsorship and tabling. Please let me know of events in your area.

Don’t forget, there is still time to register for the NGC convention, just over the lake, in Grand Rapids, MI. You can register on-line at gardenclub.org. We still have openings for three more delegates. Please let me know if you plan to attend and are willing to be a voting delegate at the general business meeting. Speaking of meetings, the WGCF annual convention and business meeting is coming up fast. Please register today – on-line at wisconsin.gardenclub.org or using the registration form from the winter issue of *Wisconsin Gardens*. Great speakers, workshops, a flower show and, yes, memories await you at the convention at The Osthoff Resort.

You may not think business meetings are memorable but I want to share a memory from our recent WGCF Executive Committee meeting. We were thick in a discussion of proposed changes in how we conduct the business of the WGCF, budget plans and future leadership needs. As I looked around the table, everyone was engaged and willing to partake in the discussion. I leave these meetings invigorated and full of energy to help our WGCF move into the future. This is an exciting time for us and WILL be full of good memories.

Enjoy your spring, happy gardening and I hope to see you soon.

**Gardening for Good
 Gerianne**

“We do not remember days, we remember moments.” – Cesare Pavese

ADVERTISING RATES		
Size	WGCF	Other
Full page	\$150	\$200
Half page	\$75	\$100
Quarter	\$37.50	\$50
Bus. Card	\$20	\$20

President's Project: Spring Work Has Begun!

Jan Dixon & Nancy Sloan, Co-Chairs

The Hilary Grace Healing Garden had a nice winter nap but the construction has started up again and is moving fast. The waterproof membrane and drainage mat have been applied. The precast panels that form the walls of the planters and the seating areas are going up. The architect for the project said that although he's been working on the garden since 2012, this is the most nerve-racking time. The placement of the panels has to be exact to make everything fit together. There is a direct line of sight from the garden entrance to the Unitarian Church designed by Frank Lloyd Wright. A kaleidoscope sculpture is planned for this end of the garden. The planters will be bottomless for drainage and have an irrigation system.

In meeting with the Garden team, we learned about the challenges for the design and selection of the trees, shrubs and perennials for the unique environment of a rooftop garden. The woody plants and perennials will be maintained by the hospital team. There will also be large pots within the design that will hold annuals and change with the seasons for continued interest throughout the year. This is where WGCF comes in! In a program we're calling Adopt-A-Pot, a club will assume responsibility for the design, planting and maintenance of a pot or area with multiple pots. The President's Project will provide up to \$75 to a club for the pot's creation. It will be exciting to see what designs and colors come from the creative minds of WGCF members.

The installation of the precast walls should be completed by the end of March. Planting will start mid-May and the garden will be open in June.

We presented our first check to Danielle Kamps, Development Program Manager for UW Hospital, for \$1500. This would never have happened without the generous donations from our clubs. Thank you, all! And remember, half of your donation will return to your district for your own Gardening For Good project.

Donors since our last publication include:: Fox River Valley Garden Club, Gretchen Vest, South Shore Garden Club, Green Thumb Garden Club, Lois Harr, Carol Larson, Joan Goebel, Madison District, Maureen Wild-Gordon, Sunset Garden Club, Westside Garden Club, Milwaukee District, Kitty Larkin, Kerwin Fund Grant, Markesan Gardeners, Elaine Seeliger, Paper Valley Garden Club, and Lynnette Rakun.



Liz Hill and Danielle Kamps of the UW Foundation recently accepted the first WGCF donation of \$1500 from WGCF President Gerianne Holzman, Gardening for Good Project Co-Chairs Jan Dixon and Nancy Sloan. (above photo) Upon the completion of the Hilary Grace Healing Garden construction, the donated funds will support plantings within the garden. Thanks to our WGCF members for their generous support.

Construction involves the installation of panels for the rooftop garden (photos at right). By looking at the other buildings in the background of each photo, a person gains an idea of the size of this garden project. It's exciting to see the progress of this project.

National Garden Week

Doris Weber, National Garden Week Chair

June 5th thru 11th, 2016 is National Garden Week and let's "Leap Into Action". This is a great week to promote your garden club with special programs, tours, garden walks, plant sales or projects that might be of interest to the public. Why not invite them to these events along with all of your club members participating. Plants or floral designs could also be presented to libraries, town halls, schools, nursing homes, or local stores. Any way to show off your garden club work and get a bit of publicity could be planned for this special gardening week. Posters proclaiming National Garden Week are available from member services at NGC, or the NGC website. I can also supply you with National Garden Club posters by contacting me at doris@johngweber.com.

National Gardener magazine

Doris Weber, National Gardener Chair

The National Gardener magazine is the official publication of NGC, Inc and is published four times annually. Every club president receives an issue of this publication. Many of its articles and suggestions can be used for the education of club members. Many noteworthy projects and items of interest are found in every issue. I suggest members/clubs submit interesting articles to the editor of this fine magazine. Club presidents should encourage members to subscribe to this great publication. I always seem to find an article that I can use at one of our garden club meetings or something that our members enjoy reading. To subscribe, call 1-800-550-6007 or go to the NGC website and download subscriptions form at www.gardenclub.org.



Central Region Changes

Gerianne Holzman

Currently, the National Garden Clubs (NGC) is divided into eight regions. The WGCF is part of the Central Region (CR) with our very own Judy Newman as director and Liz Murken as alternate director. For the last several years, the regions have been under the financial umbrella of the NGC. This has become a burden and accounting nightmare for the NGC. Recently the NGC Audit Committee and Executive Committee recommended disbanding the regions along with dissolution of their funds. The regions would no longer have annual meetings but would still select a region director to serve on the NGC nominating committee and to coordinate communication within the districts. The plan is for all of this to be completed by May 31, 2017. This is all very new and there will be much discussion on this subject at the upcoming NGC Convention in Michigan.

So how does this affect the WGCF? If all of this proceeds as outlined, there will no longer be CR awards or scholar-

ships. Most significant, for us, is the planning of the CR Convention 2017 that was to be held in Wisconsin. Over the last couple of months, the newly created CR Convention 2017 committee, headed by Kathy Casberg and Carla Von Haden of Coulee District, have toured facilities in Wisconsin Dells and have made some preliminary plans for the event. The plan was to avoid two conventions in one year. We would have a one-day WGCF Annual Business Meeting without the usual meals, speakers and workshops in May 2017. We, then, would have the more traditional speakers, workshops and tours in October 2017 to include a Tri-Refresher for landscape design, gardening studies and environmental studies and no business meetings. In light of the changes at Central Region, we will still move forward with this plan but instead of calling the event the CR Convention 2017, it will be the Garden Education Summit 2017.

More information will be available after the NGC convention; stay tuned. Please share your thoughts and concerns on this subject by sending an email to me at geriannewgcf@gmail.com. Thanks.

TRI-COUNCIL TOUR

Sunday, May 15 Bookworm Gardens

On Sunday, May 15 we will meet at Bookworm Gardens at 1415 Campus Dr., Sheboygan, WI for our Tour. Our tour will start at 10 AM, followed by lunch and meeting starting at 12:00, at the Osthoff Resort. Bookworm Gardens is a whimsical, wonderful spot for the young and young-at-heart where nature, literature and imagination come to life. Check it out at: bookwormgardens.org

The cost of lunch and tour is \$32.00. For lunch only, cost will be \$27.00. Send reservations to Gretchen Vest, Tri-Council Treasurer, 704 Spring Drive, West Bend, WI 53095-4642

We are also planning our summer tour, which may be in Green Bay this year.

Special Offering for Bulb Lovers!

Mary Kulhanek

Available for purchase at Convention this year are Crocosmia bulbs. These members of the lily family have deep green leaves with brilliantly colored flowers on with stems, so are ideal for cut flowers or for watching the hummingbirds feeding. Two varieties are available. Crocosmia Lucifer, a fiery red flower and the new variety, Star of the East with larger 4 inch soft orange blooms.

Bulbs will be sold in packs of 5. Cost is \$5.00 per pack, or any 2 packs for \$8.50. We bought in bulk so you can get a great deal!!! Photos of bulbs can be seen at www.dutchbulbs.com

Not coming to convention? Don't miss out on this deal. Have a club member shop for you. Please check out the other merchandise close-out deals at Member Services' Booth this year.

A whimsical garden based on children's literature



1415 Campus Drive
Sheboygan WI
(920) 287-7895



www.bookwormgardens.org
No admission fees
Open daily May-October

News from Clubs around the State.....

Lake Wissota Garden Club News

Barb Barrickman, President

The Lake Wissota Garden Club is "celebrating our roots" for our 40th anniversary this year and learning from our past. At our monthly meetings, our historian, Muriel Shervey, tells a story from the past. Each member is also sharing how they were uprooted, transplanted and grew roots in our club. It has been fun to learn more about each other's backgrounds, interests, families and gardening.

As Muriel shares her stories it is evident that LWGC has accomplished much in 40 years. We are proud that our projects have benefitted the Chippewa Falls and surrounding area with trees, multiple community gardens, landscaping of Habitat for Humanity homes, anti-litter campaigns, Christmas decorations, floral designs, youth garden clubs, scholarships and our annual perennial plant sale. All this has been accomplished with only 20-30 members!

Many members have also been active members of the Wisconsin Garden Club Federation throughout the years. From floral judges, committee chairs, district office holders to state office holders our legacy members of Helen Corbett, Muriel Shervey and Karen Allen have led the way. We thank them and many other past and present members for starting a grand tradition continued today.

So that we don't get rootbound, we are starting a campaign to attract new members. Reaching out more through social media and exhibiting at area garden seminars will be a goal for us this year. Check us out on Facebook. We have welcomed five new members Vicki Jones, Eileen Cvancara, Shirley Mlsna, Rosie Weber and Sharon Lay in the past year.

A sure sign of spring is evident in our Wisconsin Native Wildflower garden located in Irvine Park in Chippewa Falls. Spring's first wildflower skunk cabbage (*Symplocarpus foetidus*) is up! Ginger Wierman, the wildflower garden committee chair, snapped a picture of this plant in late February and shared this information with area newspapers. Skunk cabbage uses "thermogenesis" to heat the ground and melt its way through the snow. The brown to purple 3-6" flower (spathe) and green outer coverings are visible now as they melt circles in the snow. The spathe will open soon to reveal a club-like (spadix) covered with tiny yellow florets. The flowers have a strong odor of decaying flesh which attracts pollinators and are followed by the plant's leaves. Come and visit our garden as the past 5 years of research, planning and planting has yielded 130 native wildflowers and shrubs to enjoy.

Botany Belles and Beaus Garden Club

submitted by Anita Voiles

After hearing about the AMES Tool Company working in conjunction with the NGC and WGCF offering free tools to eligible garden clubs, I thought it would be a perfect pairing with our small garden club. Our club is in the process of restoring a Prairie behind the Viking Middle School in Woodville, WI.

Club Member Debby Walters, has been invaluable in coordinating this project with the club members, school and students. Much work has been done on the prairie up to this point.

We applied for the tools in June, 2015, after working with Elaine Gunderson, NGC AMES Tools Grant Chairman, on preparing the correct application and what was required. After completion of the application, Elaine then forwarded it on to the proper entities at AMES.

Upon review, we were granted the following tools and they were delivered in time for us to clear thistle, and aid students in digging holes for Hackberry Trees that were planted at the entrance to the prairie in October, 2015.

We received three 16-tine rakes; one long-handled shovel; two thatch rakes; and two Weed Cutters - which were invaluable in cutting down the abundant thistles that seem to want to take over this prairie. Monetarily, we feel these tools amount to a value of at least \$150 or more.

The Prairie was seeded in November 2015. We are in the process of working on a continuous basis with the 5th and 6th grade students. Students and garden club members made seed balls in early November (purchased with monies received from other applied-for grants) and the seed balls were strewn about the Prairie with the hopes that all the seeds take and there will be a glorious array of new blooms this coming Spring.

This will be an ongoing project for our club and the tools will be used for this project and also in the School Forest, when needed. They will be stored in a shed on school forest property.

A letter was sent to AMES Tool Company thanking them for their generous grant through NGC and how much we appreciated receiving these tools that will help in the Prairie Restoration Project.

Now, we just have to get rid of those darn thistles!

Lake Shore Garden Club

Doris Weber, Club President

Lake Shore Garden Club, Sheboygan District, has been busy with activities planned for the 2016 State Convention which will be held at the Osthoff Resort, Elkhart Lake. Members are busy collecting shoes for the shoe fundraiser, meeting to sign up for work schedule choices and assignments, and being informed about what is expected of each member during this Convention.

Christmas decorations were taken down at the Taylor House on January 11th. The cleanup went well and all totes with decorations were moved to the attic area and we also had a peek at the 3rd floor cupola.

Bridgeway/Trisha's Houses (two homeless shelters for moms with kids) were overwhelmed with all the gifts we provided for them at Christmastime. The 4 foot table and vacuum cleaner/scrubber and many paper and cleaning products were especially much needed items.

"LOVE, Lake Shore Garden Club" is the theme for our 67th Anniversary Luncheon being held at Pier 17 Restaurant. We will have a short talk from Chef Brian who will inform us what edible flowers he has served us along with our lunch.

We will try once again to do a plant exchange at the March 24th meeting and should bring house plants for the exchange. Members are encouraged to bring at least one that they are able to part with for the exchange. This should be fun!

Our Spring Breakfast is scheduled for April 28th to be held at Town & Country Golf Course & Restaurant. We will enjoy breakfast and our speaker Louise Mann, will tell us about Buttons, Buttons, and more Buttons.

After the Convention, we will still manage our Plant/Bake Sale being held on May 26th. It is one of our larger fundraisers and we do have regular customers who look forward to coming to this yearly sale. This is also a fun day for ALL the members to socialize and have fun at the same time.

Did you know

.....that January 19th is National Popcorn Day!!

The occasion was celebrated by Royall Elementary students in Elroy, in pre-K through 3rd grade. Students enjoyed popcorn for their afternoon snack. The popcorn had been grown in their school garden, dried by a Garden Club member, shelled by 3rd graders, and then popped and served by a member of the Hill and Dale Garden Club.

It was a great opportunity to educate students about how popcorn grows, as well as promoting school gardening classes.

Sheraton Lawn Garden Club

submitted by Marge Watson

The Sheraton Lawn Garden Club recently held a meeting and event at the Regency Senior Community in Muskego where our members volunteered to host and help the residents play Bingo. Flowering plants were brought for the Bingo prizes. After Bingo, our Club provided and served ice cream with a variety of toppings for the residents and our members.

A great, fun time was enjoyed by everyone. Our Club will be working with the Regency staff for future events.



Elmbrook Garden Club created a display for the Brookfield Library featuring the book "The Frightened Frog". (Photo above)

Central Region Awards Presented To Wisconsin Clubs

CR 7 – Protecting Our Future

1st place to Elmbrook Garden Club, Brookfield, WI

CR 9 – Cultivating Community Plantings

Honorable Mention to Botany, Belles and Beaus
Garden Club of Baldwin, WI

CR 11 – Sharing the Future

Honorable Mention to Elmbrook Garden Club of
Brookfield, WI

Milwaukee District

Lynne Ehnert, Milwaukee District Director

Since October, as District Director, I have attended four individual club events.

Elm Grove Garden Club held their annual tea where this year they had floral demonstrations from some of the district's Ikebana designers. We were presented with lovely displays of floral designs explaining the difference between a standard floral design taught in our Floral Design Schools and the Ikebana Schools.

Town & Country Garden Club focused on repurposing gourds as artwork in the yard. They held a short business meeting introducing several new members and then we worked on gourds that were dried and prepped for painting. Some members intended on using their gourds for bird houses in the yard; others wanted to use them for display.

Elmbrook Garden Club held their annual event that is designed to include both men and women. They held a Saturday night dinner with a program that incorporated our national theme 'Leap Into Action' focusing on frogs and amphibians and their habitats. The speaker was a representative from the Milwaukee County Zoo. They also used this as an opportunity to promote the book 'The Frightened Frog'.

Whitefish Bay Garden Club recently had a program on photography which focused on how to take pictures with your I-Phone. The program covered basic features of the phone and what to look for when taking your picture so that you can take award winning pictures. The photographer talked about determining your exact focal point and the importance of line, color, texture, balance and focus. It was perfect timing for the upcoming State Flower Show.

Some of the Milwaukee District Board Members also attended the Milwaukee Art Museum Garden Club's event which showcased the history of flowers in art. This event was attended by many members in the district.

We look forward to South Shore Garden Club's upcoming fundraiser 'Flaunt Your Red, White and Blue Luncheon and Fashion Show' in April. This event also includes a floral competition.



Environmental Concerns (E Concerns)

Vern Lowell, E Concerns Chair

Since my Winter article, I have discovered that we WGCFC gardeners are not as lonely as I thought. For instance, on January 19, 2016, the Wisconsin Department of Agriculture, Trade and Consumer Protection released for public comment its draft of a "Wisconsin Pollinator Plan" (https://tinyletter.com/WI_Pollinator_Plan). While it is a start in the right direction, some have been critical for it not being hard enough on the use of chemicals that adversely affect pollinator brains. And on a national level, I picked up a brochure at Garden EXPO on the "Monarch Joint Venture" for partnering across the US to conserve migration (www.monarchjointventure.org). See more about Monarch below. Recent Oscar winning actor Leonardo DiCaprio made the news in the January 10, 2016 Parade Magazine, not just for his acting but for creating a new documentary on climate change. (To read more, Google Leonardo DiCaprio's Foundation/Climate Change.) Now for another famous person's efforts, take a look at Pope Francis' Encyclical "On Care for our Environment". He is calling for a **world-wide** discussion at all levels of how to do a better job of caring for our world.

On a less positive note, The "Isthmus", a local Madison weekly highlights recent changes our legislature is making to our longstanding water protection laws that protect wetlands, water quality and control high volume water wells. The E Concern is that it will become easier to degrade our water resources going forward. (Isthmus.com February 25 - March 2).

These are but a few of the efforts to affect change, some good and some not so good, on our environment that I see as having the potential to effect positive change on our environment. It is within each one of our power as Wisconsin gardeners to make a difference too. For example, our WGCFC President, Geri Holzman, recently had her garden certified as a "Monarch Waystation". (Check out www.MonarchWatch.org/waystations for how you can become certified.)

I know there are times our concerns for the environment seem overwhelming. We do not all have millions of dollars to put into this, but we can make a difference, "Gardening for Good". Share what you're doing and I will get it into the next issue of Wisconsin Gardens. You may contact me at: vlowell@mhtc.net

Horticulture

Carol Larson

Through the seasons of my gardening life I have fallen in love many times. Peonies, hybrid lilies, Siberian iris, heuchera, hollyhocks, hosta, lupines, and the list continues. But my present passion includes hemerocallis big time! It seems there is always room to squeeze in one more daylily for any number of reasons. Say color or bi-color, single or double, ruffled or smooth edges, repeat blooming, varied heights and widths; surely that empty spot could use an update. And the names are so addictive; "Primal Scream" called my name the first time I saw it in a gardening catalogue and it certainly lives up to it's hype. It refuses to be just an "also ran", but commands your attention by it's size of bloom and striking color.

Then there are the spider types with huge blooms of 8 - 10 inches, talk about making a statement! It's true, each bloom lasts one day, but what an incentive to walk in your garden each day and see what surprises await. I label my new ones so I can call them by name as I check them out and revisit the memories of their purchase or gift from a friend, bloom history for me and pure enjoyment as the bees and hummers find the fresh blooms for that day. My tip for a color-filled border in full sun starts with daylilies, peonies

behind and hybrid lilies the third layer. This has led to a wonderful bloom season for me. The very front can change with annuals; verbena and zinnias my first choice for continuous color even as the perennials come and go.

I hope I have inspired you to grow a new daylily this year. They have very few pest issues, increase in size each year and seldom need dividing. But if you live in deer country, you will need to protect them, especially in bud stage. Some of mine are fenced, but those in the yard are sprayed with repellent a few times each summer. I would love to hear from you regarding your favorite daylily!



Green Thumb Garden Club

PLANT SALE

Perennials, herbs & surprises!

Friday & Saturday, May 6 & 7, 2016

8:30 a.m. - 6:00 p.m.

Rain or Shine

Home of Jim & Sandra Smet

552 Vermont, Fond du Lac, 923-6085

**Hwy. 41 to Hwy. 23 East, north on Peters Ave.,
east on Scott St. then north on Vermont**

**Enjoy a free tour of Sandra's
Gardens as you SHOP**

Green Thumb Garden Club is a nonprofit organization.

<http://greenthumbgardenclub.webs.com/>

20TH ANNUAL SHEBOYGAN AREA GARDEN WALK

Saturday, July 9, 2016

9:00 a.m. to 4:00 p.m.

Rain or Shine

**FEATURING 7 PRIVATE GARDENS &
PLANT SALE**

Admission: \$10

No children under 10, no strollers & no pets!

Contact Susan Steinpreis for details:

gardengalsue@charter.net



**Madison District Garden Clubs
Are Sponsoring A
HOME GARDEN TOUR
Scholarship Fund Raiser**

**Friday, July 22 & Saturday, July 23
10:00 AM to 3:00 PM**

**Ten gardens in Madison, Middleton
and Verona, belonging to Madison
District club**



**members and
friends -featuring
urban, aquatic
features, container,
and perennial
gardens - will be**

open to tour.

**Proceeds will benefit a scholarship
for high school seniors pursuing
studies in horticulture or related
fields.**

Tickets are \$10 for both days.

**Tickets will be sold at the following tour
gardens on July 22 and July 23.**

Near West Side: 501 Toepfer Avenue

Verona: 161 Paoli Street

Ticket is map to all gardens.

**For additional information
Contact: egbeeche@gmail.com**

**The Madison District Clubs are members of the Wisconsin
Garden Club Federation which provides educational
resources and opportunities for its members to promote
and to share love of gardening, floral design, civic and
environmental responsibilities.**



Members of the Madison District had the opportunity to interact with many gardeners from throughout the state during the three-day Garden Expo held in February 2016. This was a chance to share gardening ideas, as well as promote interest in membership, their District Garden Tour and WGCF.



Marketing and Publicity

Mary Kulhanek, Publicity Chair

Marketing and publicity go hand in hand. WGCF is beginning to position itself (and that means its clubs, also) to be more marketable by developing a uniform look in its publications and messages. We have approved the use of an addition to the logo in the form of a tag line: "Gardening for Good: Education Service Friendship".

On the state level, we are working on promoting the Gardening Study School, the annual convention, the awards from the convention and looking for ways to help you to increase membership. We know members join a club, not WGCF. We also know that any member or club gained or lost affects us all. Gardeners join a club that is well organized, fun and beneficial to them and their community. If you are such a club, start blowing your horn in new ways. Use the Publicity Initiative as a starting point and branch off from there.

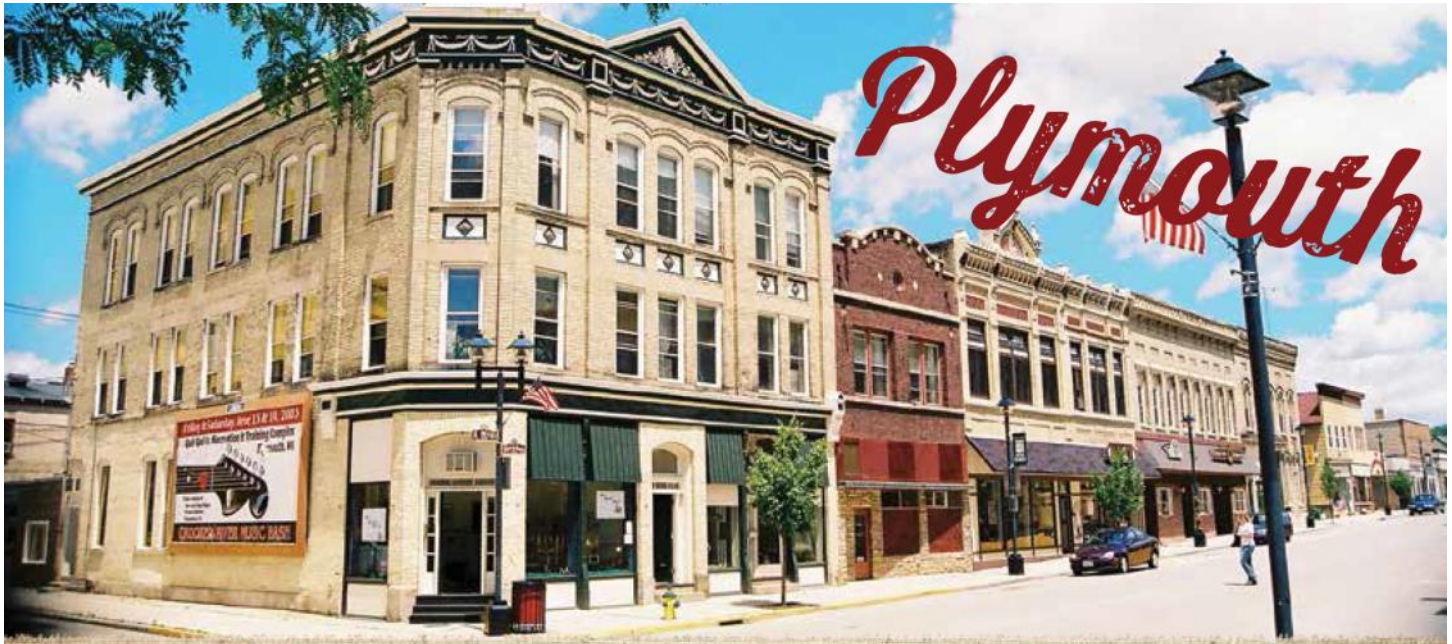
Here is an internet site to use to promote your club and its activities, both in your home town and the surrounding area. The easiest way is to prepare a statement about your club and then paste it on the site. Please consider including information that your club is a member of Wisconsin Garden Club Federation and reference the website. Use the logo and the new tag line. As WGCF becomes more known throughout the state, linking your club to it will increase the value of your publicity.

Start at www.americantowns.com. Enter your town and state and once there, scroll down on the site to Add An Organization and simply follow the prompts to fill in the blanks and paste your club description in the appropriate area. Once you save the information and proof it on the actual listing, you have the opportunity to edit it by clicking ADMIN and select edit contact information.

When you have activities such as a speaker, a special meeting, a plant sale, a garden walk or any other event, simply follow the same process, except select Add An Event and follow the prompts.

As a bonus, click on the "surrounding towns" next to your town's name and you can choose to add your organization or event to these sites in the same way, but be sure to change the auto-filled name to your town's name.

We are all in this together. I would welcome information about other internet sites you have found that would be useful for other clubs or WGCF. You may contact me at: marykulhanek@sbcglobal.net



*Unwind, relax and experience
our unique, historic town!*

WWW.PLYMOUTHWISCONSIN.COM

1.888.693.8263

PLYMOUTH, WI



Operation Wildflower

“We Are in Wisconsin, Toto”

Diane Powelka, Operation Wildflower Chair

In Wisconsin we have a variety of soil regions. When you know your soil type you can then verify what native plants will grow best in your soils. The wrong plants have less chance of surviving and thriving. In the New England Wild Flower Society Publication they had a quote, “The loss of a single native plant species can disrupt an intricate web supporting myriad plants and animals”. That should make us want to be more aware of what plants we are using in our own landscape.

Have you put in a rain garden yet? I have been putting it off for a variety of reasons, but this year I plan on doing it. Using native plants in your rain garden is the best choice because native plants will survive better, have deep roots that help channel water into the ground and are beneficial to healthy eco-systems. If you are looking for more information on rain gardens you can contact your local extension office or, in some cities, your Parks or Street Departments. Some good plant choices for rain gardens are -Bur Sedge, Cardinal flower, Great blue lobelia, Mountain mint, Wild columbine, Red Milkweed, Marsh blazing star, Queen of the Prairie, White Turtlehead, Joe Pye Weed, Ironweed and Boneset.

We also need to eliminate a few non-natives. In the north woods the Hemp nettle and Orange hawkweed are two that should be eradicated. Of course we all seem to have Buckthorn, Honeysuckle and garlic mustard. With the incursion of invasive plants we are slowly losing many of our spring ephemerals. If your club knows of an area being overrun with invasive plants, you can then go out and work on eliminating the invasive species. Besides being the right thing to do, let our State President Gerianne Holzman know what you have accomplished. Pictures are always a bonus as we all need to let other clubs know what environmentally sustaining projects we are doing.

Controlling Garlic Mustard: minor infestations of Garlic Mustard can be eliminated by pulling the plants before the onset of flowering, or by cutting it at within a few inches of the soil surface just as flowering begins. It is important to wait until flowering begins as removing the plants earlier will cause re-sprouting. Chemical control applications of 2% Roundup (glyphosate) to the foliage of individual plants and dense patches is effective in fall and spring. (Information adapted from Wisconsin Department of Natural Resources Exotic Species Manual.)

Please do not buy wildflower packages or “wildflower in a can” as the seeds within are normally not native to the area you live in. Also, while some seeds might be native, the mix will often also contain plants that you won’t want, e.g. Dames Rocket. It is an aggressive alien and, although pretty, it can become your next nightmare.

Enjoy your garden with all creatures in Wisconsin and beyond!

Navigating the Website

Debby Walters, Webmaster

The WGSF website (www.wisconsinclub.org/) is the place to go for complete information about this organization. It is updated every time someone submits new information but how to find it?

The most important section to check is the NEWS & EVENTS column in the lower right portion of the webpage. This is where information about upcoming events and educational articles is posted first. Train yourself to click on the READ MORE button in this section as that brings up ALL of the recent updates.

The major topics across the top of the page (About Us, Membership & Clubs, Education, Awards, Flower Shows, Publications, Forms, Links), all have drop down menus. Use these to locate the specific page you are looking for. There is a small magnifying glass to the right of these; use this to search the site for specific information. The site map at the very bottom of the page lists all the pages that compose this site.

The website is only as useful as the information on it. Clubs and districts are ENCOURAGED to submit information, news items and updates should be sent to Debby Walters (vikingms76@gmail.com).

The Garden Clubs of Elm Grove and
Mayfair Park Present...

*Tour
Le
Jardin*



Saturday – July 16, 2016

10 am to 4 pm

For tickets contact:

<http://www.elmgrovegardenclub.com/tour-le-jardin-garden-walk.html>

Nancy Patterson at TourLeJardin@gmail.com

or 414-257-2583

\$8 in advance, \$10 at Gardens



The Garden Conservancy's
OPEN DAYS

www.opendaysprogram.org

1-888-842-2442 (M-F, 9 a.m.-5 p.m. Eastern)

**Visit the
Milwaukee
Area's
Best
Gardens!**



Saturday, July 16

- **Hill Top House**
River Hills
10 a.m. to 5 p.m.
- **Dragonfly Farm**
Mequon
10 a.m. to 5 p.m.
- **Two Oaks**
Grafton
10 a.m. to 5 p.m.
- **The Chimneys**
River Hills
10 a.m. to 5 p.m.
- **Renaissance Garden
at Villa Terrace**
Milwaukee
10 a.m. to 4 p.m.
(Admission: \$7)

Saturday, August 6

- **Green Fire Woods**
River Hills
10 a.m. to 4 p.m.
- **Kubly Garden**
River Hills
10 a.m. to 4 p.m.
- **Ramhorn Farm**
Newburg
10 a.m. to 4 p.m.
(Plant sale here!)
- **Boerner Botanical
Gardens**
Hales Corners
8 a.m. to 6 p.m.
(Admission: \$5.50)

Saturday, August 13

- **Radler's Rosarium**
Greenfield
10 a.m. to 4 p.m.
- **Lark's Garden**
Dousman
10 a.m. to 4 p.m.
- **The Sievert Garden**
Waukesha
10 a.m. to 4 p.m.
- **Boerner Botanical
Gardens**
Hales Corners
8 a.m. to 6 p.m.
(Admission: \$5.50)

PLUS!



DIGGING DEEPER
is a series of
Open Days events

that invite the public to
take a closer look at the
world of gardening.
(Additional fees required)

- **AUGUST 6**
**Preserving Beauty at
Ramhorn Farm** with Scott
Sieckman & Matt Kastel,
Newburg
- **AUGUST 13**
**Going Green: Communing
with Moss in Dale
Sievert's Garden** with
Dale Sievert, Waukesha

GARDEN ADMISSION:

\$7 per private garden; children 12 & under free. Advanced-purchase discounted tickets available at opendaysprogram.org.
Open Days proceed rain or shine. No reservations required.

FOR MORE INFORMATION:

Find details on garden locations
and Digging Deeper events at
opendaysprogram.org

These Open Days benefit the following local public gardens:



The Renaissance Garden at Villa Terrace
Supported by the Friends of Villa Terrace
www.villaterracemuseum.org



Boerner Botanical Gardens
www.boernerbotanicalgardens.org

The Garden Conservancy is a national nonprofit supported in large part by individuals. The Garden Conservancy introduced the Open Days program in 1995 to share gardens with the public, providing easy access to outstanding examples of design and horticultural practice. The Open Days program is America's only national private garden-visiting program, and is made possible by the work of hundreds of volunteers nationwide.

Flower Shows

Judy Newman, WGCF Flower Show Schedule Chair

Flower Shows are a wonderful way to cultivate interest in joining a Garden Club. Invite members of your community to exhibit their horticulture. People love to share their prize blooms. The show can be a small show with 3 classes of designs or 12 entries. A placement show in a member's home requires very little staging and no backgrounds. One class could be staged in a living/great room. Another class could be staged in the kitchen/dining area with the third class staged in one or more bedrooms. The twenty horticulture entries of five classes for the Horticulture Division could be staged on a patio, three-season room or garage.

A simple schedule would need to be written. As WGCF Schedule Chairman, I would be delighted to help in the writing of the schedule with samples and suggestions.

Reminder to Clubs holding Flower Shows: A final Copy of the Schedule should be sent to the WGCF Schedule Chairman and WGCF President. A list of the Names and Address of the judges should be sent to the WGCF Flower Show Chairman, WGCF Flower Show Evaluation Chairman and WGCF Schedule Chairman.

Monarchs and the Milkweed Roadway

Lynn Laufenberg

The national effort to plant milkweed along "Monarch Highways" is paying off with a substantial increase of these colorful butterflies. A joint task force between the U.S. and Mexico is encouraging land owners to plant "living roadways" of milkweed along Monarch migration routes. The Mexican government is fighting illegal deforestation in the Monarch Butterfly Biosphere, a 140,000-acre forest in central Mexico where monarchs live from November to March. The Canadian government is considering funding breeding habitats on farmlands, roadsides, and utility corridors.

All Monarch life stages need shelter from predators and the elements. In the context of a Monarch Waystation, shelter is provided by the variety of plants and the density of the plantings. With spring planting season upon us, please consider making your yard a Monarch Waystation. Information and a list of monarch friendly plants is available from Monarch Watch a nonprofit educational outreach program at the University of Kansas. You can apply to have your yard certified as a Monarch Waystation through <http://monarchwatch.org>. If you are planning on planting a Monarch Waystation with a non-profit organization or school, you may apply for a free flat of milkweed (a monarch's main choice for its larvae) at <http://monarchwatch.org/free-milkweeds>. If you wish to request milkweed for purchase at <http://monarchwatch.org/milkweed-request> or search for vendors via the Milkweed Market page at <http://monarchwatch.org/milkweed-market> - be sure plants are **insecticide-free**.

Another key ingredient to Monarch success is water. Butterflies mostly drink from moisture in and on flowers including nectar and water droplets. You may also find them drinking from puddles, ponds and birdbaths. Water and milkweed make your garden a welcoming oasis for the beautiful Monarch butterflies.

Habitat for Humanity

Donita Bruder

Many members of WGCF support Habitat for Humanity. The Milwaukee District members helped by donating plants to the home, giving people information on the plants and helping them landscape their area. Girl Scouts from St. Mathias Parish created containers and baskets. We had several young people help with taking plants to homeowners' cars and putting plants in order. Encourage the Clubs in your area to help sponsor an event. You would be surprised to see how many donors are excited to share plants and contribute to this worthy cause.

Did you know?

Did you know you can keep up to date on happenings at the WGCF Executive Committee meetings by logging into the members' only section of the website? Each meeting has its own folder (e.g. Winter 2016 Executive Committee Meeting) and you can click on reports from officers, directors and committee chairs.

Having trouble logging into the members' only section? Contact membership secretary Maureen Wild-Gordon for help: wildgordon@prontomail.com

**COME TO CHICAGO
FOR THE
DEARBORN
GARDEN
WALK**

**Beautiful Private Gardens
Architectural Tours
Gardening Mini-Seminars
Designer Vignettes**

**SUNDAY
JULY 17, 2016
12PM - 5PM**

**For info and tickets, visit us at
www.dearborngardenwalk.com**

IN MEMORIAM

Olive Thomson

1915-2016



Olive Thomson was an inspirational member of the Mound View Garden Club in Mt. Horeb for 60 years. She served as Vice President and President in addition to many committees and presented programs on primulas, ferns, plant taxonomy/nomenclature and even collecting botanical postage stamps. Olive was instrumental in the club starting a prairie restoration and an herb garden at the Mt. Horeb High School. She was a longtime environmental activist and when she learned that the local grocery store had a program for customers to bring their own bags for shopping, she encouraged all club members to do this. This inspired the club to organize a community movement called "Save-a-Tree/Plant-a-Tree", in which shoppers were able to donate their 10 cents per bag refund to planting a tree/shrub to beautify Mt. Horeb. This program has raised over \$35,000 to date for community plantings.

Olive had a lifelong commitment to the preservation of native plants and was very active in grassroots local and state organizations. She was one of the founders of the Prairie Heritage Trail, which preserves native roadside plants along a 10 mile stretch of Cty JG in Dane County. She helped develop and write the Prairie Heritage Trail Guide and presented a paper on this project in Washington, D.C. at the Transportation Research Council meeting. In

1979 the Capitol Community Citizens presented her with the Orchid Award for this work.

Throughout her life, Olive received numerous awards and commendations for her extensive work. WGCF presented her with the Lydia Shafer Award in 1981 and she was proud to have been selected the state representative to a NGC Convention in South Dakota. Along with her husband, John, she received awards from The Nature Conservancy, The Prairie Enthusiasts and the prestigious Gulf Oil Award for their conservation efforts. She was appointed to the Wisconsin Scientific Areas Preservation Council, the Dane County Natural Beauty Council, the Dane County Environmental Commission and served as Chairperson of Environmental Quality for the WGCF.

In cooperation with the University of Wisconsin Extension Department, Olive organized Garden Study courses and also taught fern identification for them. She lectured and conducted workshops on environmental issues throughout the state. In 1976 she edited and revised the book Spring Flora of Wisconsin by Norman C. Fassett.

In 1987, in partnership with The Nature Conservancy and the National Audubon Society, Olive and her husband John Thomson established the Thomson Memorial Prairie southwest of Blue Mounds which protects several threatened/endangered plants and provides habitat for many grassland birds.

Olive Thomson will long be remembered for her curiosity about the natural world and her belief that each individual can make a difference and an impact on the preservation of the environment. Olive lived her 100 years to their fullest and described her life in this way: "My life has been fun! I have done what I have enjoyed. It is very gratifying now to know how many organizations and people are into the ideas that I was pioneering."

– submitted by Ed Glover & Jeanne Eloranta

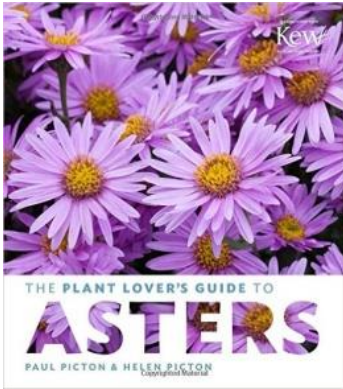
Donna Marie Woods

1918-2016

Donna Marie Woods, 97 years old, of Swanee, Georgia, formerly of Sturgeon Bay, WI passed away on January 1, 2016. Donna and her husband Roy lived in Elmhurst, IL for many years. After their retirement, they moved to their cherry and pear farm in Sturgeon Bay, WI.

Donna's granddaughter shared many memories about Granny Donna during the Celebration of Life which was held in Duluth, Georgia in January. Tamara commented: "Her natural green thumb ensured that the yards in the front and sides of their home were filled with spectacular flowers and interesting plants which more often than not then became beautiful and artistic arrangements." As a member of the Home and Garden Club of Sturgeon Bay, she left a mark. In her 30 years as a Garden Club member, she held every office of the local club as well as holding office with WGCF. She presented winning arrangements and displays, presenting at both the local and national level. As a member of the Door County Master Gardeners and Door County Historical Society, Donna was proud to help found, dedicate, and maintain the Crossroads at Big Creek Historical Village and Heritage Garden. Her daughter Janet. said that her mother just loved participating in Flower Shows.





Book Review

by Kay Villa

A Plant Lover's Guide to Asters,

Paul Picton & Helen Picton,

Timber Press, 2015, pages 1 - 247.

Thinking back to your garden this past fall did your garden need some additional color, texture, and more blooms for the migrating monarchs? With spring arriving shortly, now is the time to plan ahead and map out a strategy to add more fall blooming plants. One of the most dramatic and consistent blooming fall plants is the aster.

The authors, a father and daughter team from England, created an informative and well laid out book on the genre of asters. I've grown asters for many years but I had no idea that there were so many varieties and forms. The book is a fabulous reference to learn more about these plants. I really like how the book is organized which makes it very easy to select the perfect aster for your particular garden. And the photographs are beautiful too - large panoramic shots of gardens with billowing asters and close ups that provide visual clues on the form, texture, and color of each variety.

The book covers why asters are so loved, how to design a garden with asters, understanding the plants needs, a list of 101 varieties of asters, and information on growing and propagating these plants. In addition, there is a list of where to buy asters in the EU, Canada, and the USA and a list of public gardens with large aster displays. Another key feature of the book are the blue box sidebars with aster variety selections for: formal borders, naturalized plantings, accent plants, cottage gardens, rock gardens, containers, cut flowers, attracting wild life, shade, spring or summer blooming, award winning plants, and mildew free asters. It will never be easier to find the best asters for your fall garden.

JOHN G. WEBER COMPANY

WELCOMES THE WGCF TO ELKHART LAKE.



JOHN G. WEBER CO., INC.

1133 SOUTH 7TH STREET

SHEBOYGAN, WI 53081 920-452-4494

WWW.JOHNNGWEBER.COM

Distributor of Industrial Machinery for Wood -Plastic - Aluminum

NOTICE OF WGCF STANDING RULES AND AWARDS CHANGES

Sylvia Lowell, Organizational Studies Chair

At the October 15, 2015 meeting of the Executive Committee the following changes to Standing Rules and Awards were approved.

1. Consolidate the positions of WGCF, CR & NGC Life Membership Chairman.

A. Delete references and descriptions of WGCF, CR & NGC Life Memberships on pages 13, 14, 24, 26 & 41 of Standing Rules.

B. Insert the following on pages 24 & 25 of Standing Rules.

Life Membership

Life membership at one or more levels demonstrates pride in the organization and support of scholarship funds. The fee for the NGC Life Membership is split between Scholarship and Permanent Home and Endowment funds. The Life Membership designation provides an opportunity to honor individuals for dedicated service to local clubs, to communities and to the objectives of WGCF, CR and NGC.

General Guidelines:

The Life Membership Chairman shall:

1. Be a member of the Board of Directors.
2. Promote Life Memberships at WGCF venues.
3. Process all Life Membership applications.
4. Maintain a current mailing list of all Wisconsin Life Members in cooperation with the Membership Secretary and forward a list of new Life Members to the Editor of *Wisconsin Gardens* for publication in the Directory issue annually.
5. Provide statistics to the Awards Chairman relevant to the Larkin Life Membership Award.
6. Initiate the request for National Life Membership contribution for the President-Elect upon acceptance of the slate of officers by the Executive Committee. In the event the President-Elect is already a National Life Member, a tribute of \$100 shall be given to the WGCF Memorial Scholarship Fund.
7. Introduce new Life Members at the Annual Convention.

RATIONALE: This is an effort to consolidate Life Membership Chairmanships and make it more convenient for members interested in purchasing or becoming a Life Member.

2. Move from trial period to standard operating procedure, the Tri-Council management of Gardening Studies, Landscape Design and Environmental Studies funds. (Changes to By-Laws regarding this were published in the Winter issue of *Wisconsin Gardens* so these are the Standing Rule changes.)

Schools and Symposiums: Standing Rules p. 33

Replace the current #1 with the following: With an advance from WGCF, a Special Bank account using the WGCF Federal ID Number may be opened by the Tri-Council treasurer and Local Flower Show School or Symposium Chairman for the duration of the school. All advance money must be returned to WGCF.

Delete the following from Standing Rules, p. 34, 36, & 37 and re-number

Establish an Environmental Studies School (34) or Gardening Study School(36) OR Landscape Design (37) Bank account with Local Chairman & WGCF treasurer signatures.

Insert the following in Standing Rules: p. 39 Tri-Council

The Tri-Council Treasurer -

1. May open a bank account to manage income and expenses related to Gardening Studies, Landscape Design and Environmental Schools.
2. May request an advance from WGCF for each of the three schools at the beginning of each series.
3. Will keep detailed records of income and expenses separately for each course of each school.
4. Shall, at the conclusion of each school, Gardening Studies, Landscape Design and Environmental Studies, send any excess of income over expenses to the WGCF treasurer while retaining the \$200 WGCF advance to maintain a bank account. This excess shall be deposited in the Ruth and John West Education Fund.
5. Shall request reimbursement from the WGCF treasurer for excess expenses.
This money shall be taken from the Ruth and John West Education Fund.

RATIONALE: Tri-Council received permission from the Executive Committee to manage school funds in this manner for schools in 2014-2015. This process brought the funds closer to Local Chairman. Furthermore, it saved the cost and effort of opening and closing separate bank accounts for each school.

3. Expand the awards for Petite Small Standard Flower Show .

Petite Small Standard Flower Show Achievement Award

Insert "a" after #25.

Add the following:

25b. Petite Small Standard Flower Show Achievement Award of Miniature and/or Small Exhibits:

Sponsored by:

- a. One Club-Minimum of two (2) Special Exhibits
- b. District of Garden Clubs-Minimum of three (3) Special Exhibits.
- c. State of Garden Clubs-Minimum of three (3) Special Exhibits.
- d. State Judges Council-Minimum of three (3) Special Exhibits.

RATIONALE: There was no award for this category in the Petite Small Standard Flower Show.

NOTICE OF WGCF BY-LAW AND STANDING RULE CHANGES-PART 2

At the February 18, 2016 meeting of the Executive Committee the following changes to By-Laws and related Standing Rules were approved. Final approval of By-Law changes will be asked of delegates at the Spring WGCF convention.

A. Remove the 2nd VP as Chairman of the Finance Committee.

By-Laws: Article VII, Section 5

Currently reads:

- b. To serve as the Chairman of the Finance Committee.

The By-Law shall read:

- b. To serve as a member of the Finance Committee

By-Laws: Article XI, Section 6,

Currently reads:

The Finance Committee shall be comprised of the Second Vice-President, **who shall serve as chairman** and **three** additional voting members, one of whom shall be a Former President.

Delete the words "who shall serve as chairman", and change three to four.

The By-Law shall read: The Finance Committee shall be comprised of the Second Vice- President and four additional members, one of whom shall be a Former President.

Standing Rules: p.3

Currently reads:

The Second Vice President shall:

2. Serve as the Chairman of the Finance Committee.

Delete Chairman and insert member.

The Standing Rule shall read: 2. Serve as a member of the Finance Committee.

Standing Rules: Finance Committee, p. 15 Delete #1 & #2

Insert the following as #1 and re-number.

The Chairman shall:

1. Be appointed by the President.

RATIONALE: A new WGCF officer may not have the financial experience and historical recollection needed to be chairman. Being a member allows time for a learning curve.

B. Modify the allocation of dues.

By-Laws: Article V, Dues and Fees. Section 2

Currently reads:

Member clubs shall pay annual per capita dues of ten dollars (\$10.00) for individual membership to WGCF Treasurer by June 1. This payment includes NGC per capita dues of fifty cents (\$.50) and a yearly subscription to Wisconsin Gardens for each address. Each additional membership at the same address shall pay three dollars and twenty five cents (\$3.25) and does not include subscription to Wisconsin Gardens.

Delete the last two (2) sentences and insert "This payment includes a membership to NGC.

The By-Law shall read: Member clubs shall pay annual per capita dues of ten dollars (\$10.00) for individual membership to WGCF Treasurer by June 1. This payment includes a membership to NGC.

By-Laws: Article V, Section 6, Section 7

Section 6 Currently reads:

Each member-at-large shall pay fourteen dollars(\$14.00)which shall accompany the membership application and shall thereafter pay dues of the same amount to WGCF for each fiscal year June 1 through May 31. The fourteen dollars(\$14.00) shall include annual NGC dues and a yearly subscription to *Wisconsin Gardens*.

#6 Delete “and a yearly subscription to *Wisconsin Gardens*.”

Section 6 shall read: Each member at large shall pay fourteen dollars (\$14.00) which shall accompany the membership application and shall thereafter pay dues of the same amount for WGCF for each fiscal year June 1 through May 31. The fourteen dollars (\$14.00) shall include annual NGC dues.

Delete Section 7

Section 7 Currently reads: Affiliate clubs shall pay twenty dollars (\$20.00) annually for membership. This fee includes one subscription to WISCONSIN GARDENS and one subscription to *The National Gardener*. An affiliate club delinquent for six months shall be dropped from WGCF membership.

Standing Rules: The Executive Committee shall

Add the following

#12. Determine, on an annual basis, the additional fee to be charged for a printed subscription to *Wisconsin Gardens*. This fee is not to exceed the cost of printing and mailing printed copies.

Standing Rules: Finance – Special Funds

Currently reads:

1. Operations Fund is comprised of **ten dollars (\$2.75)** of the annual dues from each member plus profits from the Annual Convention, Ways and Means, sales and any money-making projects of WGCF. This fund is used for printing stationery, postage and expenses of chairmen and officers, when carrying on the business of WGCF.

Delete “two dollars and seventy five cents (\$2.75) of the”

Insert “ten dollars (\$10.00)” and “ payment of NGC dues”

1. Operations Fund shall read:

The Operations Fund is comprised of ten dollars (\$10.00) in annual dues from each member plus profits from the Annual Convention, fundraising projects of WGCF. This fund is used for payment of NGC dues, printing stationery, postage and expenses of chairmen and officers, when carrying on the business of WGCF.

Standing Rules: Finance – Special Funds

Currently reads:

6. Magazine Fund: This fund is comprised of the six dollars and seventy-five cents (\$6.75) per member portion of the annual dues plus the advertising sold for *Wisconsin Gardens*. It is used to publish and mail *Wisconsin Gardens*.

Delete #6 Magazine Fund

Insert a revised description which shall read:

#6: Magazine Fund: This fund is comprised of fees paid by members wishing a yearly printed subscription of *Wisconsin Gardens*. A printed subscription fee will be determined on an annual basis by the WGCF Executive Committee.

RATIONALE: A less restrictive policy is needed as the Finance Committee develops an annual budget which would still require the approval of both the Executive Committee and convention delegates.

C. Additional Actions Regarding *Wisconsin Gardens* Magazine.Standing Rules: The Membership Secretary Shall

Delete #7 which currently reads:

7. Send updated membership file to the printer of *Wisconsin Gardens* quarterly for the purpose of mailing labels for the magazine. Include every fully paid WGCF membership, the NGC President and Vice-Presidents, Central Region Director, Alternate Director and State Presidents in Central Region.

Insert a new #7 as follows:

7. Send a list of postal addresses of paid subscribers of the printed version of *Wisconsin Gardens* to the printer, quarterly, for mailing purposes.

E-mail addresses of members with e-mail addresses shall be used for sending notice that the electronic copy of *Wisconsin Gardens* is available on the WGCF website. Included among email addresses are the NGC President, NGC Vice Presidents, Central Region Director and Alternate Director as well as Central Region Presidents.

Standing Rules: Wisconsin Gardens and Editorial Staff

The Circulation Manager shall:

Delete #2 & 3 and re-number

Currently reads:

2. Direct the Printer to send 15 copies to the President.
3. Direct the Printer to send 15 copies to the Editor.

Standing Rules: Wisconsin Gardens and Editorial Staff

The Editor and Assistant Editor shall:

Insert a new #5 and re-number

5. Direct the printer to send printed copies to the current President, Vice Presidents, Membership Chairman, Publicity Chairman, Editor, Advertising Editor, and Scholarship Chair, as needed.

RATIONALE: *Wisconsin Gardens* will change to an electronic version June 2016. All members will receive a PDF version of the magazine. By going to an electronic version only, funds will be available for other areas of the budget such as marketing, NGC dues increase etc. This should not require a raise in WGCF dues from WGCF.

D. Finance: Use of WGCF Debit card

Standing Rules - Insert the following after Finance-Special Funds (alphabetically)

Finance: Use of WGCF Debit Card

A debit card has been issued by the financial institution where WGCF accounts are held. A debit card is an advance of budgeted funds for an officer in order to avoid the use of personal funds.

1. The President and 1st Vice President / President-elect may possess and use the debit card for the duration of their term in office. Each designated officer shall visit the WGCF financial institution, provide identification to acquire a WGCF debit card.
2. The debit card may ONLY be used for:
 - A. Payment of registration, lodging and travel expenses associated with required attendance of designated officers at official events associated with NGC, and CR conventions as well as and NGC board meetings provided that said officer stays within the annual budgeted amount for said position.
 - B. Payment of an electronic meeting subscription such as Go To Meeting (GTM)
3. Each officer using the debit card shall:
 - A. Send an e-mail to the WGCF treasurer prior to using the debit card stating what will be spent and vendor's name.
 - B. Secure and send to the WGCF treasurer the original debit card receipts of transactions that contain the name of the vendor, location, contact information, listing of what was purchased, and date within two weeks of a transaction.
 - C. Each receipt shall contain the name of officer using the debit card. Failure to comply may result in the loss of the use of the debit card as determined by the Executive Committee.
 - D. Each officer designated to use the card shall be responsible for it.
Loss of the debit card shall be reported to the WGCF treasurer and WGCF financial institution immediately. Said officer will immediately cancel the debit card and request a replacement.
 - E. The WGCF Treasurer shall reconcile the debit statement.

By-Laws: Article VII, Duties of WGCF Officers: Sections 2,3,4

Section 2: The duties of the President are:

Section 3: The Duties of the First Vice-President are:

Section 4: The Duties of the President Elect are:

Standing Rules: Duties of WGCF Officers

The President shall:

The First Vice-President/President Elect are:

Add the following to **By-Laws: Article VII and Standing Rules: Duties of WGCF Officers**

Continue with lettering or numbering:

Send an e-mail to the WGCF treasurer prior to using the debit card stating what will be spent and vendor's name.

Secure and send to the WGCF treasurer original debit card receipts of transactions that contain the name of the vendor, location, contact information, listing of what was purchased, and date within two weeks.

Each receipt shall contain the name of officer using the debit card. Failure to comply may result in the loss of the use of the debit card as determined by the Executive Committee.

Each officer designated to use the card shall be responsible for it.

Loss of the debit card shall be reported to the WGCF treasurer and WGCF financial institution immediately. Said officer will immediately cancel the debit card and request a replacement.

By-Laws, Article VII Section 8

Standing Rules: Duties of WGCF Officers

The Duties of the Treasurer are:

The Treasurer shall:

Add the following and continue with lettering/numbering

Reconcile debit card statement using receipts provide by designated officers.

Standing Rules, Finance - General Guidelines:

Add the following to #3 & #4

The debit card may be used to pay registration, lodging and travel expenses associated with required attendance of designated officers at official events associated with NGC , and CR conventions as well as and NGC board meetings provided that said officer stays within the annual budgeted amount for said position.

RATIONALE: To add guidelines for use of the Debit card provided by WGCF financial institution.

The following Standing Rules have been approved by Executive Committee via electronic voting and will be ratified at the Pre-Convention Executive Meeting.

Organizational Studies: Allotments; Electronic Meetings/Votes; Appreciation Fund

A. Allotments for the WGCF President, 1st VP, President-Elect

Standing Rules: Finance :General Guidelines #3 currently reads:

3. An annual allotment not to exceed two thousand (\$2000.00) shall be budgeted for the WGCF President for attendance at NGC Fall Board Meeting, NGC Convention and the Central Region Meeting at which the National President and Central Region Director with whom she serves. These funds shall be pro-rated if any one of these functions is not attended and the funds shall be transferred to the President's representative. (C.R meeting 20%. NGC Fall Board Meeting 25%., and NGC Convention 55%).

Delete \$2000.

Insert: Registration, package plan, travel expenses and one-half of the cost of a double room rate associated with the expected attendance shall be paid up to but not exceed \$2300 during a fiscal year.

Standing Rules: Finance: General Guidelines #3 shall read:

3. An annual allotment shall be budgeted for the WGCF President for attendance at NGC Fall Board Meeting, NGC Convention and the Central Region Meeting at which the National President and Central Region Director with whom she serves. Registration, Package plan, travel expenses and one-half the cost of a double room rate associated with the expected attendance shall be paid up to but not exceed \$2300 during a fiscal year. Budgeted funds shall be pro-rated as follows: C.R meeting 20%. NGC Fall Board Meeting 25%., and NGC Convention 55%.

Standing Rule : Finance: General Guidelines #4 currently reads:

4. An annual allotment not to exceed seven hundred and fifty dollars (\$750) shall be budgeted for the First Vice-President/ President-Elect for attendance at NGC and/or Central Region meetings. These funds shall be pro-rated and if either function is not attended by the First Vice-President/President-Elect, the pro-rated funds shall be transferred to the Second Vice-President, if attending. (C.R. 25%, NGC 75%)

Separate 1st Vice President and President-Elect

Insert: Registration, package plan, travel expenses and one-half of the cost of a double room rate associated with the expected attendance shall be paid up to but not exceed \$750. (\$1500: President-Elect) in a fiscal year. Budgeted funds shall be pro-rated as follows: C.R meeting 20%. NGC Fall Board Meeting 25%., and NGC Convention 55%.

Standing Rules: Finance General Guidelines #4 shall read:

4. An annual allotment shall be budgeted for the First Vice-President attendance at the Central Region Annual meeting/convention. Registration, package plan, travel expenses, and one-half of the cost of a double room rate associated with the expected attendance shall be paid up to but not exceed \$750. This allotment shall be available only during the first year of the 1st VP term.

During the second year of the 1st VP term, an annual allotment shall be budgeted for the President-Elect attendance at the NGC and Central Region Annual meeting/convention. Registration, package plan, travel expenses and one-half the cost of a double room rate associated with the expected attendance shall be paid up to but not exceed \$1500. These funds shall be pro-rated as follows: C.R. 25%, NGC 75%.

RATIONALE: In appreciation for the time and effort contributed by the President, President-Elect, and 1st Vice President, WGCF developed a practice of assisting these officers with expenses incurred while attending NGC and CR meetings. Assistance is based on number of meetings attended. Amounts have been increased because of increasing costs.

B. Electronic Meetings/votes

Standing Rules: Executive Committee currently reads:

There are three regular meetings of the Executive Committee held each year – summer, fall and winter. Special meetings may be called by the President. Attendance at all Executive Committee meetings is required. Regular meeting dates are set by the President and are announced at the Post-Convention Board of Directors Meeting.

Add the following:

The Executive Committee may vote utilizing electronic means, i.e. e-mail, provided that the vote is ratified and recorded at one of the three regular Executive Committee Meetings. Electronic votes involving the expenditure of funds may not exceed \$200. It is recommended no more than one vote is taken per quarter.

Standing rules: Executive Committee shall read:

There are three regular meetings of the Executive Committee held each year – summer, fall and winter. Special meetings may be called by the President. Attendance at all Executive Committee meetings is required. Regular meeting dates are set by the President and are announced at the Post-Convention Board of Directors Meeting.

The Executive Committee may vote utilizing electronic means, i.e. e-mail, provided that the vote is ratified and recorded at one of the three regular Executive Committee Meetings. Electronic votes involving the expenditure of funds may not exceed \$200. It is recommended no more than one electronic vote is taken per quarter.

Standing Rules: Standing Committees currently reads:

Standing Committees shall conform as closely as possible to those of NGC. Each WGCF Chairman shall function as the liaison between respective NGC, Central Region and District counterparts. Chairmen shall disseminate information and initiate programs promoting the goals and objectives of each chairmanship and the work of WGCF.

Add the following: Standing Committees may utilize electronic means to meet.

Standing Rules: Standing Committees shall read:

Standing Committees shall conform as closely as possible to those of NGC. Each WGCF Chairman shall function as the liaison between respective NGC, Central Region and District counterparts. Chairmen shall disseminate information and initiate programs promoting the goals and objectives of each chairmanship and the work of WGCF. Standing Committees may utilize electronic means to meet. Minutes should be recorded at every meeting and forwarded to the president.

RATIONALE: This clarifies how electronic meetings may be used.

C. Appreciation Fund

Standing Rules: Finance-Special Funds #7 Appreciation Fund currently reads:

The Appreciation Fund is derived from donations of twenty-five cents (\$.25) per member collected at the same time as annual dues. The Appreciation Fund is segregated for the purpose of purchasing the WGCF President-Elect's National Life Membership every election year. The remainder of the money is used toward the Central Region Director's expenses every fourteen (14) years when it is Wisconsin's turn to elect a Central Region Director.

The Chairman shall:

1. Be the WGCF Treasurer.
2. Apply for a National Life Membership for the incoming WGCF President upon approval of the Executive Committee in the fall prior to the election year. The application, with a check for two hundred dollars (\$200.00), is sent to the WGCF National Life Membership Chairman.

~~#7 Appreciation Fund from Standing Rules: Finance-Special Funds:~~ Transfer current value of \$2710.25 on Balance Sheet from Appreciation Fund, an Equity account to Awards Incentive Fund, an Equity account. This would be a journal entry

RATIONALE: NGC provides assistance for CR Director travel. An NGC Life membership for the incoming WGCF President shall become a budgeted item. The WGCF Treasurer shall continue to make this purchase upon approval of the Executive Committee in the Fall prior to election year.

Standing Rules: Awards Committee

Add the following:

13. Upon approval of the Executive Committee, the Awards Committee may utilize up to a total of 10 percent of the Awards Incentive funds in any one fiscal year for the purpose of including a monetary award with up to two outstanding certificate awards #4-15 based on Awards Committee criteria. This excludes award #7, the Ruth West Horticultural award which is a monetary award.

RATIONALE: This preserves the fund and allows for the possibility of a monetary award to accompany a certificate award.

DATES TO REMEMBER

MAY

- 2 - 7 NGC Convention - Grand Rapids, MI
- 15 -17 WGCF Convention, Osthoff Resort, Elkhart Lake

JUNE

- 16 WGCF Summer Executive Committee Meeting, Wausau
- 17-18 Environmental Study School, Mequon

SEPTEMBER

- 9 - 10 Gardening Study School, Appleton
- 26 - Oct 2 NGC Fall Executive Board Meeting, Portland, ME

OCTOBER

- 7 -9 Central Region Convention, Springfield, IL
- 20 WGCF Fall Executive Committee Meeting, Wausau

2017

FEBRUARY

- 15 WGCF Awards Committee - Wausau (evening meeting)
- 16 WGCF Winter Executive Committee - Wausau

APRIL

- 21-22 Gardening Study School, Appleton

MAY

- 16-21 NGC Convention, Richmond, VA
- (TBA) WGCF Annual Business Meeting, Wausau

JUNE

- (TBA) WGCF Summer Executive Committee Meeting, Wausau

SEPTEMBER

- 8-9 Gardening Study School, Appleton
- 12-15 NGC Fall Executive Board Meeting, St. Louis, MO

OCTOBER

- 6 - 8 Garden Education Summit & Tri-Refresher, Wisconsin Dells

To a Pansy by Dawn Mozgawa

You are cheerful soul of Spring.
 A friendly face, a simple thing
 You wait, patient, with humble grace
 For Sun to shine onto the place,
 Where each May you dance and I, besotted,
 With your colors splashing, spotted,
 Blue and purple, yellow, white,
 Fall to your charms in full delight,
 Never haughty like the Rose,
 Or stiff like Iris, Heaven knows,
 Neither Hyacinth or Jonquil pose
 Quite as sweetly as you play
 Upon my heartstrings as you sway.


KEEP CALM

DONATE

HONOR SOMEONE

MAKE YOUR MONEY WORK TWICE AS HARD
 CONTRIBUTE TO THE SCHOLARSHIP FUND
 AND HONOR SOMEONE WITH A LIFE MEMBERSHIP

www.wisconsinngardenclub.org



Memorial Scholarship Fund Donations

Please make checks payable to WGCF Scholarship Fund
 c/o Community Foundation for the Fox Valley Region, Inc.
4455 West Lawrence St., Appleton, WI 54914

The enclosed donation of \$ _____ is designated for the WGCF Scholarship Fund.

CLUB NAME _____ DISTRICT _____

DONOR NAME _____ PHONE _____

ADDRESS _____

INDIVIDUAL/CLUB DONATION - MONEY TO BE SPENT IN CURRENT YEAR

DONATION TO REMAIN ANONYMOUS

DONATIONS APPLIED TO PRINCIPAL

INDIVIDUAL/CLUB DONATION

WISCONSIN LIFE MEMBERSHIP

IN HONOR OR IN MEMORY OF:

NAME: _____

ADDRESS: _____

SEND ACKNOWLEDGEMENT TO:

NAME: _____

ADDRESS: _____



6622 CTH V
Sheboygan Falls, WI 53085

Non-Profit Org
US Postage
PAID
Permit No. 2783
Madison, WI

wisconsinclub.org

Deadline for Summer Issue: June 1, Submissions Welcome

Publication approximately July 1, delivery by July 15

Due to the variability of bulk non-profit postage delivery, WGCF and *Wisconsin Gardens* takes no responsibility of late delivery of event announcements. Please plan accordingly.

Coming in the Summer 2016: Awards, Convention Report, Tri-Council, Judges' Council, Memorials and Tributes, Landscape Design Schools, Landscape Consultants, Yearbooks, Web Page, Smokey the Bear/Woodsy Owl, Treasurer's Annual Financial Report, Books, Design. Articles also needed by general members, please consider writing about your garden, activities, club projects, etc.



Looking out my window, I am again seeing a covering of snow that arrived during the night, and it makes me think of how quickly our weather can change some days from a "white-out" one minute to a sunny sky a few minutes later. I'm reminded of that "old wives' tale" about how it has to snow on the robins' tail three times before it becomes Spring. It seems to me that this must be a confusing time for the robins as they search for food. In our own lives, we often see changes that occur like the weather changes in the days of April, from blustery to sunny. Our WGCF organization is continually going through changes in order to stay current and vital. At this year's Convention, WGCF delegates will be voting on many changes to the landscape we have always known. Delegates will vote on changes to our dues structure, magazine and other funds, expenses, etc. (see proposed and approved changes on pages 17-22). If you have questions or comments on these topics, contact your District Director or a state officer. If the changes for *Wisconsin Gardens* are approved, a notice will be sent to those who have an email address listed with our Membership Chair when *Wisconsin Gardens* is posted on our website. We also hope to offer subscriptions for a printed copy of *Wisconsin Gardens*. Some of us prefer to read from a tablet, computer screen or Kindle, while others prefer reading books, newspapers and magazines with that item in our hands. We hope to offer both options. In talking with our representative at EconoPrint, I learned that our magazine can be a color copy for those who wish to subscribe, since it is less costly to use different printers when printing fewer copies. I'm excited about this option of offering colored copies to everyone, whether it be an electronic or printed copy. I'm hoping that those of you who feel most comfortable with reading a printed page will consider subscribing to receive a paper copy of *Wisconsin Gardens*. I've enjoyed sharing thoughts with you through this editorial and I hope that you will continue to read our magazine in some format, for the information about WGCF and what others in our state are doing. Please continue to share your articles about what's happening in your clubs. Your feedback and comments about this publication, are appreciated. My email and home address are listed in the right column on this page.

Carla

Editor: Carla Von Haden

wisconsinclub.org@centurytel.net
1504 Academy St., Elroy 53929
608-462-5239

Assistant Editor: Anita Voiles

anita.voiles@gmail.com
852 162nd St Hammond 54015
715-796-2786

Circulation: Maureen Wild-Gordon

wildgordon@prontomail.com
742 Oak Ridge Rd.
Oregon, WI 53575
608-287-6501

Advertising: Anita Voiles

anita.voiles@gmail.com
852 162nd St Hammond 54015
715-796-2786

Contributors: Barb Barrickman, Carol Bessler, Donita Bruder, Jan Dixon, Lynne Ehnert, Jeanne Elorant, Ed Glover, Gerianne Holzman, Mary Kulhanek, Carol Larson, Lynn Laufenberg, Sylvia Lowell, Vern Lowell, Dawn Mozgawa, Judy Newman, Diane Powelka, Julie Schoenike, Nancy Sloan, Kay Villa, Anita Voiles, Carla Von Haden, Debby Walters, Marge Watson, Doris Weber

Published quarterly at Elroy, WI by the Wisconsin Garden Club Federation, member of National Gardens Clubs, Inc. Supported by Club Membership. Subscription price \$6.00 per year, single issue copies \$2.00. Distribution: 1200
Editor reserves the right to edit contributions for size and content.
Printed by EconoPrint, Verona, WI