

Wisconsin Gardens



in this issue:

In the President's Words	2
Convention Highlights	6-7
Awards	8-10
Our District Directors	14-16
Horticulture	19
Landscape Design School	21-22
Dates to Remember	23



Gardening Thoughts

*"We can complain because rose bushes have thorns, or rejoice because thorn bushes have roses."
-- Abraham Lincoln*

2015 W&CF Convention Highlights



Installation of W&CF Officers was conducted by NGC President Sandra Robinson at the Friday Banquet during Convention. Officers for 2015-2017 are: Kitty Larkin, Parliamentarian; Lynnette Rakun, Treasurer; Diane Olsen, Recording Secretary, Maureen Wild-Gordon, Membership Secretary; Gerianne Holzman, President, and NGC President Sandra Robinson.



W&CF President Gerianne Holzman (left) and Immediate Past President Sylvia Lowell (right) visited with NGC President Sandra Robinson (photo at left). "Take It to the Lake" was made possible with a trip on the Vista Fleet. Members were informed of the history of Lake Superior and viewed many sights of the Twin Ports Harbor (photo below). First Vice President Peggy Grubbs, who was unable to attend the Convention, was installed into office by Kitty Larkin during the June leadership day (photo, lower left).





WGCF is a not-for-profit educational organization founded in 1928. It is a member of National Garden Clubs, Inc.

Mission: WGCF provides education, resources and opportunities for its members to promote and share the love of gardening, floral design, civic and environmental responsibility.

WGCF 2015-2017 Officers:

President: Gerianne Holzman
7437 Terrace Ave.
Middleton, WI 53562
608-345-6907
geriannewgcf@gmail.com

First Vice President: Peggy Grubbs
2350 80th St.
New Richmond, WI 54017
715-248-3943
peggymcgrubbs@aol.com

Recording Secretary: Diane Olsen
4838 North 71st Street
Milwaukee, WI 53218-2513
414-578-2513
gunga_din13@hotmail.com

Membership Secretary: Maureen Wild-Gordon
742 Oak Ridge Rd.
Oregon, WI 53575
608-287-6501
wildgordon@prontomail.com

WGCF Treasurer: Lynnette Rakun
6622 CTH V
Sheboygan Falls, WI 53085
920-946-1673
lmrakun@live.com

NGC President: Sandra Robinson
London, Kentucky
sandy5342@gmail.com

Central Region Director: Judy Newman
N49 W18935 Joetta Drive
Menomonee Falls, WI53051
414-861-7134
newman9641@aol.com

NGC Headquarters:
4401 Magnolia Avenue
St. Louis, MO 63110
nationalgardenclubs.org

Words from our President....



New beginnings, new adventures and new ways to help our members and our communities... As your WGCF president, I encourage all of you to do something new for your club. It may be inviting a friend, neighbor, relative or acquaintance to attend your next club meeting. You may volunteer to pick up a less abled person and take them to a garden in your area. Clubs always need leaders, what about you? Speaking of leaders, as we move into this new term of officers, we will continue many of the items begun through the strategic planning processes conducted during Sylvia's term. Members asked for training in leadership and membership recruitment/retention. Our leadership workshop on June 11 was in direct response to this request. We helped new and old leaders discover and rediscover their connections to the WGCF, National Garden Clubs and Central Region. Seminars were also conducted on roles of officers and running a productive and fun meeting. Lastly, attendees learned how to stimulate people to be leaders. A well-attended membership workshop at the annual convention in Superior was abuzz with ideas for increasing and retaining members. The membership team met within days of the workshop to strategize plans. Stay tuned, they are busy! Other groups soon to meet include convention/education and the continuation of the fund raising committee including the affectionately called "calendar girls."

Giving back to our communities is important to increase our exposure, provide needed services and just to be of help. During the next two years, we will donate money to the Hillary Grace Healing Garden at UW Hospital & Clinics in Madison. We all know the mental and physical benefits of being in our gardens. Studies have shown that green environments can help reduce anxiety and blood pressure, speed recovery from surgery and help people cope with stress. They provide a welcome respite for hospitalized patients and families, as well as for those who strive to heal them. When accompanying my late sister, Carole, to her chemotherapy appointments at UW Hospital & Clinics, I quickly realized there was no good relief from the hospital environment. Upon hearing of the creation of the Hillary Grace Healing Garden, I knew it was a perfect fit for my president's project of Gardening for Good. (Carole, also a gardener, would have agreed!) The garden, located on an old helipad, is still under construction. The goal is to have much work done by this fall with a grand opening next spring. (See more information in a related article in this issue of *Wisconsin Gardens*.) While it is great to provide help for this garden in a regional medical facility, it will be even more special to provide seed money for other garden therapy projects across the state. Therefore, one-half of all monies donated to the WGCF president's project will be returned to its district of origin for a similar project. Each district will make a decision on how the money will be distributed. (Perhaps individual clubs might submit proposals.) The money will be disbursed at our annual convention in 2017.

Thank you to all the members of the Indianhead district for bringing us to the lake. We all had a wonderful time and great work was accomplished. Thank you to our NGC president Sandra Robinson for attending our event. Finally, thank you so much to Sylvia Lowell for her leadership and guidance as our 2013-15 WGCF President.

Gardening for Good
Gerianne

ADVERTISING RATES

Size	WGCF	Other
Full page	\$150	\$200
Half page	\$75	\$100
Quarter	\$37.50	\$50
Bus. Card	\$20	\$20

WGCF Seasonal Almanac

Wendy Kramer

Greetings to all WGCF members!

As an offshoot of the Strategic Planning Committee, we are launching a new publication to be available in late October. Why?

Because we want to celebrate what WGCF is and does for members and communities. We want to highlight the many projects and activities occurring throughout the state that are sponsored by clubs, districts and the WGCF. At the same time, we want to share our gardening knowledge in a meaningful way with each other and non-members. And, oh yes, we want to raise money for WGCF!

This is a tall order but "The Calendar Girls", as our Past President, Sylvia now calls us, are willing to lead the effort and sincerely hope you will enthusiastically join us.

What started as a wall calendar project has morphed into what will be a much more useful Wisconsin Garden Club Federation Seasonal Almanac. We are using that as our title for now, to give you an idea of what we are working on.

Please support this project by:

1. Submitting photos of gardening scenes, events and activities. While we will accept for consideration any photos that meet the requirements outlined in the attached information, we are especially interested in having you share what your clubs and districts have accomplished in your area of Wisconsin. These photos do not have to be of current projects or events. If your project from 3 years ago is blooming strong, send a photo to show the results of your efforts. There are no restrictions on the size of photo or the season of the year. If you have a stunning photo of your garden club project in winter, we want to see it...and so do your fellow WGCF members. Don't forget to consider a "Make It and Take It" session, plant sale that raises money for your community projects, nursing home therapy sessions etc. etc. You are proud of your efforts so let others celebrate your successes and see the diversity of activities WGCF members are involved in!

AND/OR

2. Sending in your gardening tips! We all have something to offer in the way of shortcuts and super ideas that we have learned from other gardeners and experts. Let's share the knowledge and make gardening more fun for all.

AND/OR

3. Taking the time to send in information about your favorite catalogs dealing with plants and supplies for gardeners. Please include the name of the publication, a phone number, a web site and a little information about why you like it! If you have a super local nursery/garden center that you'd like us to consider including, please send that information along too!

AND

4. Purchasing the Wisconsin Garden Club Federation Seasonal Almanac this fall!

All photo submissions must be accompanied by a "Release for Publication" form which can be found on the WGCF website or from Wendy Kramer (remark@baldwin-telecom.net).

We are asking you to share in this effort to both publicize all that is good about WGCF, to share our successes with each other and to support our members and our organization. We are excited about this project and hope you will be too!

Sincerely,

"The Calendar Girls"

Wendy Kramer, Chairman, Carol Larsen, Carol Catlan, Cathy Schrauth, Mary Kulhanek, Kerry Krokos

2015 PHOTO REQUIREMENTS AND SUBMISSION INFORMATION FOR WGCF SEASONAL ALMANAC

Any number of photos can be submitted from any WGCF garden club member. Ideally, each district will be represented.

Photos MUST:

- Be color and of high quality and resolution
- Be sent via e-mail in either jpg or bmp format
- Be accompanied by a description and location of content
- Be accompanied by the name of the photographer.
- Be accompanied by a Release Form for each and every human subject in the photo. (Release Form: "Release for Publication and Website")

Photos CANNOT:

- Be taken by a professional photographer or studio
- Have a date on them
- Be submitted except via e-mail. No hard copies will be accepted.

SUBMITTING PHOTOS: Submit photo(s) with accompanying information to Wendy Kramer: remark@baldwin-telcom.net Copy both your District Director and your Club President.

SUBMITTING TIPS AND CATALOG/GARDEN CENTER INFORMATION: Simply send an e-mail with your information to Wendy Kramer:

remark@baldwin-telcom.net

DEADLINE FOR PHOTOS and TIPS and CATALOG/NURSERY INFORMATION IS AUGUST 1, 2015.

Landscape Design School

Gretchen Vest, Landscape Design Chairman

How fast the year has gone. We just completed our third school and are now working on the fourth and final course of this series. Our students have all done so well.

If you have not refreshed since the Bi-Refresher in 2012, your status will expire in 2017. I would encourage you to take this next school. The next series will not start until 2018 and many of you need the Refresher before that time. It is a lot easier to do it now rather than having to apply for an extension or go out of state. Remember, extensions are only granted for unordinary circumstances.

In our next school there is a new class on community gardens. This reading is NOT from 'Stewarts of the Land'. You must get the reading online. It is "History and Development of Community Gardens: A Brief History of Urban Garden Programs in the United States" by Laura Lawson available at:

<http://ljlawson.rutgers.edu/assets/pdf/UGPlecture.pdf>.
It will NOT be available as a handout at the class.

I know some members do not have computers and/or are not familiar with the internet. Please take this article to your local library and ask your librarian to help you download the information and copy it. If you copy the address to take with you, please remember that the periods (or dots) are necessary. Copy it exactly as typed. It is interesting stuff so don't miss it because you are not familiar with the format. Your librarian will be glad to help you.

I hope to see many of you in September.

UPCOMING SCHOOLS OFFERED IN CENTRAL REGION

Flower Show School, Course I, August 25-27, 2015 in Midland MI Contact Alice Mesaros registrar, 989-710-0441, alicemesaros@yahoo.com

Flower Show School Symposium, September 1-2, 2015, Bellville IL,
Wilma Conley, mascoutahgarden@gmail.com

Environmental Studies School, Course IV, September 18-19, 2015 Mequon, WI,
Nancy Gregory, enjayee@yahoo.com

Landscape Design School, Course IV, September 23-24, 2015 Madison, WI
Vern Lowell, Chair, vlowell@mhtc.net

Treasurers' Year End Report

Lynnette Rakun, Treasurer

At the end of the 2014–2015 fiscal year, the WGCF Balance Sheet showed Assets of \$4,543.27 in checking, \$4,937.52 in savings and \$71,443.93 of restricted funds in Vanguard Investment funds and Certificates, for Total Assets of \$80,924.72. Income included \$11,089.50 in total membership dues, \$3,480.50 in Ways & Means and \$1,297.50 in Wisconsin Gardens' advertising revenue. The 2014 State Convention income was \$11,669.00 and the Tisket-aTasket raffle raised \$869.00. Total income for the year was \$31,551.37.

Some significant expenses for the year include NGC Dues \$573.50, Meeting Expenses \$2,337.25, Officer Travel Expenses \$2,750.00, Ways & Means Expenses \$1,596.79 and Wisconsin Gardens' printing and postage \$8,868.73. Convention expenses totaled \$9,226.36. In addition \$125.00 was given to the Scholarship Fund; \$65.00 to the NGC Presidents project; \$215.00 to Natural Disasters USA; \$32.00 to Natural Disasters International and \$1,834.46 to the WGCF Presidents Project (Generations Park).

Total expenses were \$27,164.00. The Net Income for the year was \$4,387.37.

Complete Balance Sheet and Income & Expense Reports are available from Treasurer Lynnette Rakun, lmrakun@live.com.



Central Region Director Judy Newman (left) and Alternate Director Liz Murken are busy with plans for Central Region of National Garden Club, including ways of "Cultivating Connections" which is the theme for 2015-2017.

"Up Your Membership Game"

Vern Lowell

At the 88th Annual Convention of WGCF in Superior, the Membership Work Group held a discussion with members in attendance on what kind of help clubs could use from WGCF on recruiting, retaining and growing members in their clubs. Some highlights of the discussions are:

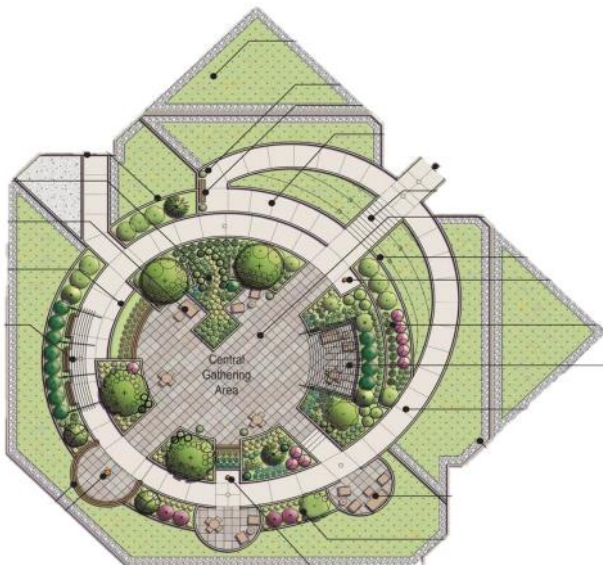
- Personal contact is essential, e.g., member to friend, member to neighbor, etc.
- Be "public", i.e., showcase your club so people know who you are
- Be "out there" in your communities and be recognizable as garden club members
- Engage the community in your service projects
- Share your finest plants with the community thru plant sales
- Emphasize that garden club membership means education, service and friendship
- We need help in the way of a "tool box" of ideas, contacts, sample letters, logos, etc.
- Keep it simple, the pamphlet/brochure.

The Membership Workgroup will begin work immediately to develop the tools we need to be successful at growing and sustaining our clubs. We will take advantage of the good work already available to us thru NGC, other states, Master Gardeners, and some of our own members and clubs.

Please continue to share your ideas and needs with us:

Lucy Valitchka, Diane Olsen, Sandi Smet, Jess Wickland and Vern Lowell

Proposed Design for Hilary Grace Healing Garden



Gardening for Good

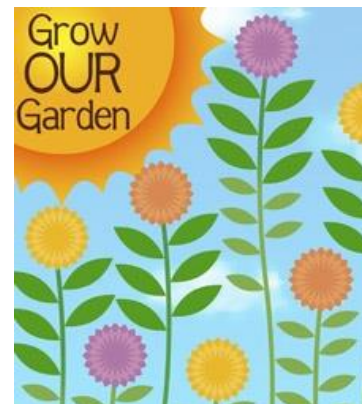
Gerianne Holzman, WGCF President

The WGCF Project for the 2015-17 term of office is supporting the creation and maintenance of the Hilary Grace Healing Garden at UW Hospitals & Clinics in Madison. The garden began with a donation from Ms Grace's family to create a respite for patients and caregivers during their time at the hospital. Green environments reduce anxiety and blood pressure while speeding surgical recovery and helping people cope with stress. The garden, located on a third floor rooftop, is currently under construction with the grand opening expected in spring 2016. (see *Proposed Design at lower left of this article*) The WGCF donations will help to purchase plantings and maintain the garden. We will be recognized on the garden's donor wall.

While the UW Hospital and Clinics is a regional medical facility, serving patients throughout Wisconsin and the Midwest, we also want to give back to local communities. For every donation, sent to the WGCF, one-half of the monies will be set aside and returned to the district of origin for a "Gardening for Good" project in their own communities. Each district will then decide how to spend their money. Members may also donate on-line directly to the Hilary Grace Healing garden through the UW Foundation. However, since this money goes directly to the garden, we cannot return half of it to the districts. The options for donations are as follows.

1. Send a check to WGCF treasurer Lynnette Rakun, **in subject line write "Gardening for Good" and indicate your district for credit**
2. Donate on-line: <http://www.uwhealth.org/growourgarden>, **in Inscription Information write "For WGCF"** to give credit to WGCF

For more information, please contact the project co-chairs Jan Dixon (rmjadixon@gmail.com) or Nancy Sloan (nancysloan305@att.net). Thank you for your support of this wonderful project.



“Take it to the Lake” at the 88th Annual Convention

Thank you to all our wonderful WGCF members and guests who participated in the 88th Annual Convention at Barker’s Island in Superior, “Take it to the Lake.” It was such a joy to greet our old friends and make new ones. Your warmth, enthusiasm and generosity made this a convention to be treasured.

We started “Taking it to the Lake” by learning about gardening in the north country with Tom Hansen of the Duluth Grill where they grow food for the restaurant. And if you can’t grow outdoors, a visit to Bay Produce taught us how to grow hydroponic tomatoes indoors. Kym Christopherson of Delicious Yoga taught us how prepare our bodies for gardening as Mother Earth Meets Yoga. Birds, bees and peas were the focus of Mary Bluth’s earring class. Speaking of bees, Jon Otis of Lake Superior Honey gave us a taste of honey. Louise Levy helped us understand that “What You Don’t Know Can Hurt Your Trees.”

Our Thursday guest speaker, Dr. Erika Washburn of the Lake Superior National Estuarine Research Reserve highlighted research activities taking place on the lake to connected communities to Lake Superior. She also described the Rivers2Lake educational program which provides extended training, mentoring, and resources to teachers for use with students. We had the opportunity to visit the NERR Learning Center, lab and the City of Superior Rain Garden on Friday. Then we literally “took it to the lake” with a Vista Fleet boat tour of Lake Superior, the harbor and the St. Louis River.

During the Installation Banquet, our Bronze Award winner, Kevin Schoessow, an Area Agriculture Development Agent with UW Extension, spoke about the Spooner display garden and showed pictures of how it was turned into an AAS national award winning garden. He also talked about the newly introduced plants.

Special guest, NGC President Sandra Robinson spoke about the effects of pesticides, the role of native pollinators and plants and the importance of habitat for bees and butterflies. NGC is partnering with the National Wildlife Federation to work on the Million Garden Challenge by the National Pollinator Garden Network. The goal is to help establish one million gardens to support pollinator recovery. Take a moment to learn more from the President’s speech on www.gardenclub.org/about-us/.

The agenda continued Saturday morning with a discussion on recruiting new members by the Strategic Planning Membership Committee. This was followed by brunch and a slide show of the multi-million dollar Tower Avenue Landscaping project by Mary Morgan of the City of Superior.

Congratulations to all the Award winners, the Silent Auction winners and the Tisket-A-Tasket winners.

Indianhead District is very proud of two of our own Spooner Garden Club members, Julie Hustvet and Bonnie Brandt. Julie won the Creative Horticultural Award #3. For 14 years she has developed and hosted the New Ventures Garden Seminar to educate the public on all aspects of gardening. She has support from the Spooner Garden Club, North Country Master Gardeners, Northwood School and numerous businesses. Bonnie Brandt won the \$50 Hopp Media Award #34. She compiled a 200 page genealogy commemorating the Spooner Garden Club 80 Years of History 1932-2012. Bonnie has created a marvelous record of our past and a stepping stone for the future. New members will see our proud history.

Congratulations!!! You are ALL winners.

Convention Chairs: Karmyn Brown, Sue Wallace, Carol Larson, Joan Goebel



WGCF President Gerianne Holzman discusses her upcoming term with NGC President Sandra Robinson and Former NGC & WGCF President Kitty Larkin.



Convention-goers always enjoy buying “chances” at winning one of the beautiful baskets. And if you missed the Auction on the last day of Convention, start getting ready for next year’s Auction!!

Our Convention floral design luncheon featured six creative designers who described their inspiration (and secrets) to create designs and how they used these to create “Take it to the Lake.” Designers were Marion Books, Lynne Ehnert, Carole Hopp, Wendy Kramer, Lynn Laufenberg and Judy Pitcher.



Floral design by
Marion Books



Floral design by
Lynne Ehnert



Floral design by
Carole Hopp



Floral design by
Wendy Kramer



Floral design by
Lynn Laufenberg



Floral design by
Judy Pitcher

Congratulations 2015 WGCF Award Recipients!!



LYDIA SCHAFER AWARD
*Mary Ellen Sedlacek,
Fox River Valley District*



BRONZE AWARD
and Convention Speaker
Kevin Schoessow



CREATIVE HORTICULTURAL
ACHIEVEMENT AWARD
*Julie Hustvet (center) with President
Sylvia Lowell and District Director
Karmyn Brown*



GARDEN CLUB
OF THE YEAR AWARD
Elm Grove Garden Club
*Cheryl Lausten (center) with Sylvia
Lowell and District Director Lynn
Laufenberg*



WISCONSIN CIVIC
ACHIEVEMENT AWARD and
WISCONSIN LANDSCAPE
CONSULTANTS AWARD
Willow River Garden Club
*Carolyn Craig (center) with President
Sylvia Lowell and District Director-
Wendy Kramer*



KUETHER DISTRICT
MEMBERSHIP AWARD
Sheboygan District
Gretchen Vest accepting award



LARKIN LIFE
MEMBERSHIP AWARD and
MURKEN MEMORIAL
SCHOLARSHIP FUND AWARD
Fox River Valley District
Pat Ritchie, Director



WISCONSIN JUDGES COUNCIL
EDUCATIONAL AWARD #22
Botany Belles and Beaus Club
*Debby Walters (right) with Sylvia
Lowell and District Director
Wendy Kramer*



RUTH SMITH
EVALUATION AWARD
Lynne Ehnert (left)
*with Sylvia Lowell and District
Director Lynn Laufenberg*

Congratulations 2015 WGCF Award Recipients!!



HOPP MEDIA AWARD
Spooner Garden Club
Bonnie Brandt (center) with President
Sylvia Lowell and District Director
Karmyn Brown

OTHER AWARDS PRESENTED DURING CONVENTION:

Conservation Award	<i>Lake Wissota Garden Club</i>
Pat Dvorak Yearbook Theme Award	<i>Wisconsin River Garden Club</i>
Design Award	<i>Lake Wissota Garden Club</i>
Nancy Gotham Endangered Species Award	<i>Elmbrook Garden Club</i>

WGCF STANDARD FLOWER SHOW AWARDS:

#17-1a	Standard Flower Show sponsored by One Club "Weather or Not"	Floral Designers of Wisconsin
#17-2a	Small Standard Flower Show Achievement Award "Aurora Borealis"	Creative Floral Arrangers
#21	Dorothy Nelle Sanders Small Standard Flower Show Award "Aurora Borealis"	Creative Flower Arrangers
#23	Flower Show Schedule Award "Weather or Not"	Floral Designers of Wisconsin

WGCF AWARD EXPLANATIONS

Procedure for applying for any of the awards and Award Criteria is listed in the WGCF Handbook and on WGCF website.

Lydia Schafer Award	Given to an individual for distinctive achievement and/or service to WGCF
Bronze Award	Presented to a non-member for exceptional & outstanding accomplishments in any field that advances WGCF objectives
Creative Horticultural Award	Presented to a member who has made outstanding contribution to creative horticulture
Garden Club of the Year	Presented to the Garden Club whose achievements do the most to promote the objectives of WGCF
Wisconsin Civic Achievement Award	Presented to a club, clubs or district for a civic achievement in one of these categories: Civic Achievement, Preservation of Beauty, Operation Wildflower, Rustic Roads & Historic Trails
Kuether District Membership Award	Presented to the District having the greatest percentage of increase in membership
Pat Dvorak Yearbook Theme Award	Presented to the Club with the most effective use of a theme displayed throughout their yearbook
Larkin Life Membership Award	Presented to the District having the greatest percentage of increase in Wisconsin Life Memberships
Murken Memorial Scholarship Award	Presented to the District that gives the greatest amount of money per capita to the Memorial Scholarship Fund

“And Then Some” Awards

Robert Kersten, Coulee District

Kay Villa, Fox River Valley District

Kathy Empie, Indianhead District

Karen Lee-Wahl, Madison District

Laura Skoff, Milwaukee District

Elaine Wagner, Sheboygan District

Kathy Wood, St. Croix District



“And Them Some” Award Winners Laura Skoff (left, in photo at left) and Kathy Empie (left, in photo at right) pose with President Sylvia Lowell and their District Directors Lynn Laufenberg and Karmyn Brown, after receiving their awards.



YEARBOOK AWARDS

CLUBS HAVING 13-17 MEMBERS

Bay Gardeners
Elm Grove Garden Club
Sun Prairie Garden Club

Indianhead District
Milwaukee District
Madison District

1st Place
2nd Place
3rd Place

CLUBS HAVING 18-22 MEMBERS

Oshkosh Garden Club

Fox River Valley District

1st Place

CLUBS HAVING 23-29 MEMBERS

Wisconsin River Garden Club
Elmbrook Garden Club
Tilling Thyme Garden Club

Fox River Valley District
Milwaukee District
Coulee District

1st Place
2nd Place
3rd Place

CLUBS HAVING 30-39 MEMBERS

Spoooner Garden Club
Ikebana

Indianhead District
Milwaukee District

1st Place
2nd Place

CLUBS HAVING 40 OR MORE MEMBERS

Milwaukee Art Museum Garden Club
Whitefish Bay Garden Club
Green Thumb Garden Club

Milwaukee District
Milwaukee District
Fox River Valley District

1st Place
2nd Place
3rd Place



Members of the Madison District gathered to congratulate Gerianne Holzman on her upcoming term as WGCF President, and thank Sylvia Lowell for her leadership and service as WGCF President for 2013-15.

Memorial Service

At the WGCF Annual Convention in Superior, a Memorial Service was conducted honoring our departed Garden Club friends and family.

“For everything there is an appointed season,
 A time for sharing
 A time for caring
 A time for loving
 A time for giving
 A time for remembering
 A time for parting.
 You have made everything beautiful in its time.
 For everything you do remains forever.”

This year’s memorials were given to the following: Jean Moran, Myrt Ogilvie, James Gotham, Merle Klug, Ida Schilstra, Dorothy Blesch, Karen Timonen, Richard Schneidham, George Moy, Joan Behm, Mike Pavlis, Eleanor Henich, Carla Krueger, Diane Silkey, Phylis Swedish, Roger Olsen, Elizabeth Bar, Gladys Shaw, Ella Mae Janick Karanda, and Sharon Neyer.

Thank You Lord for Our Departed Friends.

Gracious God and merciful Father, whose eyes are on the sparrow and who loves the lilies of the field, we give you thanks for these Garden Club friends who are no longer with us.

We thank you for their friendship.
 We thank you for their contribution to garden club work.
 We thank you for their leadership and wisdom.
 We thank you for the openness of mind and willingness to help
 We thank you for their integrity, kindness, and loyalty.
 You comprehend our grief and understand our tears; and as we say farewell, let memories of them linger in our hearts. Amen.

Elvera Jacot, Memorial Chair



State Presidents of Central Region for 2013-15, are shown on Awards Night after accepting awards at the NGC Convention. (photo above) Gerianne Holzman is congratulated by NGC President Linda Nelson on becoming a Four-Star Member. (photo, above right)

WGCF members take time for a “photo op” during the NGC Convention. (photo at right) Members who attended the Convention were: (front row) Gerianne Holzman, Sylvia Lowell; (back row) Vern Lowell, Judy Newman, Liz Murken, Julie Schoenike, Kitty Larkin, Lynne Ehnert, Marion Books, and Judy Pitcher.



News from Clubs around Wisconsin.....

Ivy League Garden Club

Judy Salzwedel

Blue Star Memorial Highway Marker to be rededicated in Sheboygan October 10, 2015.

The Blue Star Memorial Highway System is a beautification project to educate the public towards higher standards of roadside development. It is a nationwide chain of living roadside memorials to honor the armed forces of the United States of America and all individuals who have served or will serve in this nation's armed forces. This rededication ceremony will also honor the Gold Star Families.

Gold Star Families is a not for profit organization recently created to provide support to those who have lost a loved one in service to our country through the United States Armed Forces. All family members representing all conflicts, all branches of service and all circumstances of death are supported. Family members are referred to as Gold Star, families of the fallen and/or survivors.

Many of us do not know the significance of the Gold Star and the Blue Star. The important custom of these symbols became a custom of families of servicemen hanging a banner called a service flag in the window of their homes. The service flag has a star for each family member in the United States Armed Forces. Living servicemen were represented by a Blue Star, and those who had lost their lives were represented by a Gold Star.

Join the Ivy League Garden Club at the Blue Star Memorial Highway Marker site at the Sheboygan County Veterans Memorial Park located at the entrance to Sheboygan via Blue Star Memorial Highway USH 23, when they honor our nation's Armed Forces at 1:30 PM, October 10, 2015. We will also proudly welcome the Gold Star Families' patriotic program which encompassed our entire country. The National Garden Clubs, Inc., Blue Star Memorial Markers Chairman, Andrea Little, Westborough, Maine, will be present to enlighten us about how we can give back through honor, hope and healing with The Gold Star Families.



Lake Wissota Garden Club

Ginger Wierman

Arbor Day Celebration

Nineteen 3rd & 4th grade students from Christ Lutheran School in Chippewa Falls, their teacher Miss Ranzenberger and 13 members of Lake Wissota Garden Club planted an Autumn Blaze Maple Friday, April 24th at the Lafayette Fire Station to celebrate National Arbor Day. As members of Young Sprouts, a youth garden club sponsored by Lake Wissota Garden Club, the students learned the importance of trees to the environment & the proper way to plant a tree. Members Lois Koziol & Linda Bergen are the leaders of this junior garden club.



Green Thumb Garden Club

will be celebrating our

65th Anniversary

at our July 23, 2015 meeting.

It will be held at the De Neveu Shelter
at Lakeside Park in Fond du Lac

We will be having a Pot Luck dinner at
5:00 pm with the meeting to follow.

July 1950 - July 2015



HANDBOOK changes which reflect actions approved at the Annual Meeting in May, 2015 to amend the WGCF Bylaws.

**ARTICLE VI
OFFICERS, DIRECTORS AND METHODS OF ELECTION**

Delete b) of Section 4, Article 6 of the By-Laws in its entirety.
Section 4. Renumber c) to b)

**ARTICLE XII
NOMINATIONS AND ELIGIBILITY**

Section 3 a) To be eligible for the office of First Vice-President, a nominee shall have served as a member of the Board of Directors for a minimum of two years prior to the election.

**ARTICLE XI
STANDING COMMITTEES AND DUTIES**

Section 8 a) The President, President-Elect shall appoint a new member or members to serve for three years, replacing the retiring member or members, with the approval of the Board of Directors. Appointments to be made annually by the President-elect in the odd-numbered years and by the President in the even-numbered years.



"POSTCARDS ACROSS AMERICA"
A Standard Flower Show
presented by
**Floral Designers of Wisconsin
Garden Club**
August 13 - 16, 2015
State Fair Park Horticulture Building

**"Celebrating
Fifty Years of
Gardening"**



Wisconsin River Garden Club
Wisconsin Rapids, Wisconsin
1965-2015

Meet our District Directors

Kathy Casberg, Coulee District

My very first involvement with gardening was working on my parents' farm, either making hay (food for the cows), or working in the big vegetable garden (food for us)! Along with garden produce came the need for canning, something I also enjoy to this day.

I discovered the PBS show "The Victory Garden," and, couldn't get enough of it. Eventually more garden shows entered the TV viewing market. I watch as many presentations, as I can, on many channels.

During a church anniversary event, the subject of gardening came up, and a fellow parishioner asked, "have you ever thought of joining a garden club?" I said yes, was invited to an April meeting in 2006. The following January, when no one would take the president position, I literally had the books dumped on my lap. I knew nothing and am still learning about the position. Now in my 10th year, I am still learning, and still, no one wants the position! And yet, I continue to tell people, garden club is the best organization I have ever joined. It is the people you meet, who are just the best! You never are at a loss on what to talk about - we are all gardeners, all just so enthusiastic about what we grow! For a District project, we are considering a Blue Star Memorial, and are also open to other suggestions. My primary environmental concern is the use, misuse, and overuse of pesticides.

Karmyn Brown, Indianhead District

After finishing the work of being a part of a team to plan the 2015 Convention, I am now relaxing and enjoying my gardens. I have been the District Director for the past several years, and have been in garden club for about 20 years. I came to the northern part of the state as a young girl when my Dad was a Forest Ranger with the DNR. Conservation and environmental concerns have always been very important to be. My grandparents were farmers. My parents always gardened and enjoyed gathering wild fruits and berries. I continue down the same path but enjoy growing roses in particular as well as other flowers.

Our District is encouraging members to become more involved in floral design. A Design Study Group has been formed, and lessons will be taught by Carol Larson, Carolyn Craig and other designers.

After hearing about the Duluth Grill during Convention, we are planning a social gathering at the restaurant in August to check out all of the ways that a variety of vegetables are incorporated into the entrees.



District Directors Dawn Mozgawa, Lynne Ehnert, Kathy Casberg (above photo) and Karmyn Brown (left photo)

Dawn Mozgawa, Madison District

I am the new "recycled" Madison District Director. I served about three years as director in the early 90's.

I am a native of the Finger Lakes Region of New York State and I moved to Wisconsin in 1991 with my husband, Rob, my daughter, Kate, and a boatload (really, it was a boat) of favorite perennials that I just couldn't leave behind. Wisconsin is very much like Upstate New York and it didn't take long for us to feel right at home.

I originally joined a garden club when I was first married in 1979, with our first house and a good-sized yard that was crying out for some interest and color. During those years, I discovered I really loved to design with flowers as well as grow them and I studied to become a flower show judge.

I love perennials, but I also can't live without my pots of annuals on our deck and at the front door. My favorite colors are blue, purple, rose and white and I enjoy a casual relaxed garden atmosphere. (i.e., it's not exactly manicured). Like a lot of folks, I just can't help stopping at any nurseries I run across, I just then have to find "somewhere" to put what I buy!

My theme for our district for the next two years is "Cultivating Our Common Ground." Garden club means many different things to many people and what is so delightful is that we can each choose our own personal interests and share with other members. Whether growing or showing, civic beautification, preserving natural resources or garden therapy, the National Garden Clubs, Inc. has a welcome home for all of us.

I look forward to working with our District members and with our new WGCN President, Gerianne Holzman to "garden for good."



District Directors Wendy Kramer, Gretchen Vest, and Pat Ritchie

Lynne Ehnert, Milwaukee District

When I was little we each had a row in the vegetable garden we had to weed – maybe my interest in gardening started then. Though I really didn't do much gardening until I was an adult with my own home, once I hit that stage of my life, it all started. I joined a garden club after I had been to about 10 NGC conventions (mostly to the fun events and never the meetings) and one of my mother's friends (and now mine) asked me several times to join the garden club. She felt I was a good candidate because I helped out on all the fun events anyway, so I might as well join. So finally, I gave her the first year's dues and 6 months later I was President of a Garden Club. That's when I decided to go to Flower Show School and become an accredited Flower Show Judge.

I have been Club President for 4 years, 2nd Vice District Director the last two years and held Chairmanships on the State, Region, and National level for the past 6 years.

Our District theme is "Reach Out – Join Hands". Instead of having individual District chairmanships, we are joining hands at the club level to work with other clubs to make a larger impact. This will give us the opportunity to work together and strengthen our team.

Our District is looking to work with the Fisher House at the VA Medical Center on establishing a healing garden.

My environmental concern regards what happens to the land when there are new developments? What happens to the food source? How much concrete is too much concrete?

Wendy Kramer, St. Croix District

My theme for the 2015-2017 term is "Growing Relationships". I think it builds on the NGC theme of Leap into Action; Central Region theme of Cultivating Connections; and our WGCF President's theme of Gardening for Good.

When we grow relationships we are working with other people in our neighborhoods and communities. It might be sharing our love of gardening with children, teaching a class on butterflies, transforming a woodland or forest into a park or community sanctuary, or anything in our communities that will help make the world around us a better place.

We need to grow our relationships within each of our garden clubs, and then expand our relationships into our communities, our state, our central region and our nation.

I think it is important to get to know people as a means to grow relationships. Therefore, I will share a little bit about myself. I was born and raised in Iowa; attended the University of Iowa and receive a degree in nursing; worked 29 years for St. Croix County DHHS-Public Health; retired in 2012; have 3 adult married children and 6 grandchildren. Because I was busy with work and family, I did not become involved in the garden club until 2000. I always enjoyed gardening, especially flowers. I think my love of flowers moved me to attend the Flower Show Schools and become an Accredited Flower Show Judge in 2014. About eight (8) years ago (sorry, but I don't keep a good record of dates), I was asked to be the WGCF Member Services Chairman. By accepting this position, it opened many doors for me and it helped me grow more relationships! I would like to encourage EVERYONE in WGCF to volunteer for a position in the organization as it will bring you many happy rewards in the future.

Another benefit I derived from being Member Services' Chairman is that I attended the Environmental Studies and Landscape Design Schools. Not only did I sell items for Member Services at these schools, but I also enrolled in the schools. Eventually, I will become an NGC Environmental and Landscape consultant. One of the very important lessons I learned in these schools, is the importance of planting natives. This helps sustain wildlife and provides beauty around us. This year the St. Croix District is celebrating its 40 year anniversary. To recognize this event, we will be hosting a Standard Flower Show, "Friendship and Flowers" at our fall district meeting on September 10, 2015. The three (3) clubs in our district, Botany Belles and Beaus, Lake Wissota, and Willow River each have on-going major projects. These include a school forest, a community park, and a reflection garden.

Article about District Directors continued on page 16.

Meet our District Directors

Pat Ritchie, Fox River Valley

I started in garden club in the fall of 2001 by taking a flower show school class. Joan Behm, flower show judge, was judging at our county fair and I told her that I wish I could do a better job of judging flower arrangements. She told me about flower show school and I signed up. I was not a member of a garden club and didn't know anything about them. After taking one round of classes I joined the garden club in Weyauwega. I completed the then 5 sessions and took the test to become a flower show judge. The first year I was in garden club, I was elected Vice President because our club was very small. The President changed jobs during my first year and I became president. I have served as District Secretary and District Yearbook Chair. I currently served as State Smokey Bear Chair and State Yearbook Chair. I'm starting my second term as district director.

Our District Theme is going to remain "Bloom Where You Are Planted"

Since I live in an area where there are lots of lakes and rivers I guess my greatest environmental concern is water quality.

Gretchen Vest, Sheboygan District

My interest in gardens, like many of you, came from my grandmother. I was a flower picker! I couldn't keep from putting my nose in every flower I could find. The colors! The scents! Who could resist. I never found a flower I didn't like. It was a logical step to my own garden when I had my first home I heard about the local garden club on the first garden walk in our area. I decided to give it a try. My plan was to get whatever information they were offering and get on with my life. I was not going to get involved. I was not a club person. I would go to the programs only. That was my plan. We all know what happens to the best laid plans. When we moved to Wisconsin in 2001 I was into my second term as president for my club and vice director of my district.

My theme for my term is "Learn and Share" We all are constantly learning not only as gardeners but as people. Knowledge is better shared so I would like to have more interaction within our district. We are a small district and I would like to see us do more activities together. Hopefully we will all realize the benefits of being part of something larger than just our individual groups.

At the moment my greatest environmental concern is invasive plants.

Each District Director was asked to share a gardening tip, as well as mention an environmental concern, which is included in the article about each of them.

Kathy Casberg, Coulee District: I have many gardening tips, but there is one that I use whenever I have a lot of pots to fill. Invert the domed lid on a large Rubbermaid-type trash can. It becomes a "potting sink" that catches soil as you're filling pots. It brings your potting up to a comfortable level. Then you can dump residual soil back into the bag, or whatever you keep soil in, maybe the RM trash can!

Pat Ritchie, Fox River Valley District: My gardening tip is to look at all the weeds in your garden, not as weeds, but as habitat for birds butterflies and bees.

Karmyn Brown, Indianhead District: We have to deal with a variety of weather-related challenges. Even within my yard I have several micro-climates. If a plant does poorly in one area, don't throw it out, move it. Another spot may make a world of difference. Gardening is always a work in progress

Dawn Mozgawa, Madison District: My gardening tip? Take your camera with you out into the garden. There is always going to be something great to capture on any given day. Also photos of this year's garden will help you to know where to move and plant new additions next spring.

Lynne Ehnert, Milwaukee District: Plant the kind of garden you like – you are the one that will probably spend the most time in it. Enjoy it!

Gretchen Vest, Sheboygan District: If weeding has gotten away from you, try doing a small amount each day rather than a whole afternoon or morning. Take a small part of the garden and do that or devote a half hour each day and soon it will be done.

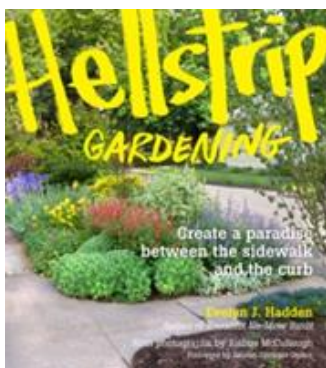
Wendy Kramer, St. Croix District: I think a very important gardening and environmental tip to remember when we visit the nurseries and garden centers is to buy native plants for our landscape.

Book Review

by Kay Villa

Hell Strip Gardening & Fairy Gardening

Both of these books are really entertaining and educational reads and their titles alone compel you to pick them up and find out what is inside. These gardening styles are highly specialized but they look like fun and would offer even the most experienced gardener a set of new challenges .



Hell Strip Gardening: Create a Paradise Between the Sidewalk and the Curb,
Evelyn Hadden, Timber Press, 2014

Got an awful terrace between your sidewalk and the street? Or is your garden club thinking about creating a public garden in a very tight small strip of land? This is your 'go to' book to help you create this type of garden. A number of municipalities in the US (Portland, OR; Minneapolis, MN; San Francisco, CA; Boulder, Co; Buffalo, NY; Seattle, WA; Charlotte, NC; Boise, ID; Berkeley, CA) are leading the way in the development of gardens in these ignored and underutilized strips of land. These gardens beautify the community as well as to serve as corridor habitats for migrating birds and insects. There are four sections in the book: Inspiration Gardens - Curbside Gardens from Coast to Coast; Situations - Challenges to Address, Obstacles to Overcome; Creation - Solutions for Designing, Building, and Managing a Curbside Garden; and Curbside - Worthy Plants. Highlighted topics of discussion are: how to work with association and city covenants and regulations to get these gardens developed; not using them for potential productive (food) gardens because of pollution and contamination issues; and the minimum area requirements to have healthy trees. Trees greater than 35' tall need a minimum of 40 sq. feet of root zone; and trees 25' or less need 8 to 10 sq. feet of root zone. This book will help gardeners, civic groups, and home owners beautify the world one little strip of land at a time.



Fairy Gardening: Creating Your Own Magical Miniature Garden, Julie Bawden-Davis and Beverly Turner, Skyhorse Publishing, 2013

As a child, I was never very interested in playing with doll houses but after reading this book I know what style of garden I want to have when I grow up. *Think getting older, I can't physically work in my garden any longer; and I'll be residing in a condo, apartment, or health care facility.* A fairy or miniature garden might be the perfect gift for me, a family member, or a friend who can no longer maintain a full sized garden or is living in a building with no exterior space for a garden. These miniature gardens are captivating and creative expressions that simply reside on a table top, in the corner of the room, or on a patio.

Think of any style or form of gardening that you love and enjoy and create it in miniature.

The scale of these gardens provides the mental and visual illusion of being in a full-sized landscape and that scale is created by the placement of small figures in the garden scene. The key to a successful project is the correct planning and execution - a theme, captivating focal point, proper accessories, creating action, telling a story, planting and care practices, finding the perfect container, and the miniature plant selections. The authors suggest looking for fairy garden accessories while shopping for Christmas decorations, in the cake decorating aisle at the craft store, or your children's toy boxes. The book also does a great job of explaining how to bring balance to the container design, excitement with high contrast of plant materials, scene animation with the selection of the proper accessories; and how to change the season theme with a simple replacement of accessories. Dream big and grow small is the way to capture the magic.

Tri-Council Article

Gretchen Vest

The annual meeting of Tri-Council was held in Superior. Last year Tri-Council agreed to take over writing checks for each of the three schools since we felt that this would save money in the long run by not printing checks and opening accounts each time a school was held. Our Treasurer Carole Hopp informed the group that this arrangement worked very well. We will now ask WGCF's Organizational Studies to work on a change to WGCF's bylaws to make this permanent.

We then discussed our own Bylaws changes. It was sent back to committee for wording changes.

Officers were elected for the upcoming term, and they are: Vern Lowell, Chairman; Nancy Gregory, Secretary; and Gretchen Vest, Treasurer. There were no nominations for Vice Chairman from the nominating committee or from the floor. That position remains open and our nominating chairman, Lucy Valitchka will continue to search. If you get a call, please consider accepting the position.

Our summer meeting will be visiting the Monk Garden and possibly the sculpture garden at the Woodson Museum in Wausau. We will pick five dates and see what works best for most of us. It will be exciting to see the progress that the Garden has made since it was the President's Project under Lucy Valitchka and Judy Pitcher. We hope many of you will join us.



Friendship and Flowers

A District Standard Flower Show

Celebrating St. Croix District's 40th Anniversary
 1975-2015



Thursday, September 10, 2015

Open to Public

3:00 – 5:00 pm

At the Cook-Rutledge Mansion

505 W. Grand Avenue

Chippewa Falls, Wisconsin

A SPECIAL THANKS

to

**MEMBERS OF
 INDIANHEAD DISTRICT**

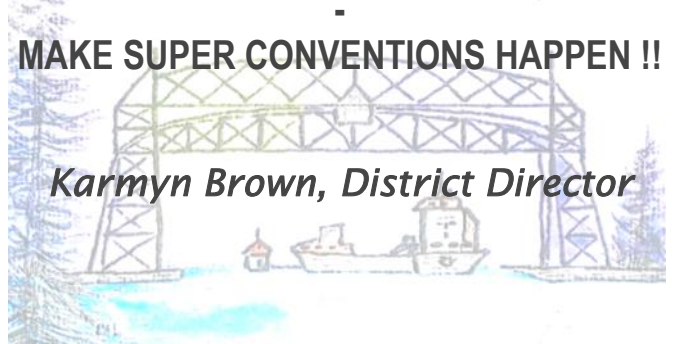
FOR

THE GREAT CONVENTION

SUPER PEOPLE - WORKING SUPER HARD

MAKE SUPER CONVENTIONS HAPPEN !!

Karmyn Brown, District Director



Horticulture

Nancy Gotham

Lathyrus Odoratus or Sweet Pea

Sweet pea (*Lathyrus odoratus*) is a flowering plant in the genus *Lathyrus* is in the family Fabaceae (legumes). It is an annual. Its native range is Crete, Italy and Sicily, zones 2-11. General Height is 3.00 to 8.00 feet. Spread is 2 to 3 feet.

Sweet Peas offer one of the widest color ranges. All varieties are not fragrant, but those that are bring on wonderful aromas; there about 160 species.

GROWING SWEET PEAS

1. Choose a site in full sun with rich, well-drained soil.
2. Work in some compost before planting. Seed them directly where you want them to grow as they don't always transplant well. Plant one half-inch deep.
3. Soak seeds overnight and plant them an inch deep three to four inches apart.
4. Water thoroughly after planting. Try not to water again until after the seeds have germinated.
5. Fertilize every two to four weeks with a slow-release fertilizer. They are heavy feeders. Fertilizer may be added at planting time.

IDEAL PLANT CARE

1. Plant in an area with good air circulation.
2. Water early in the day so leaves will be dry.
3. Dead head faded blooms often otherwise blooms will go to seed and not produce blooms regularly.
4. DO NOT grow sweet peas where other legumes are growing such as bean varieties in the vegetable garden.
5. Provide a trellis or string system for the sweet peas to climb.
6. Slugs love the young shoots.

Break or soften the hard seed coat prior to planting. This can be done by soaking the seeds in water overnight or nicking the brown coating with a nail clipper or a piece of sandpaper

If starting seeds indoors, use biodegradable pots such as peat pots or homemade paper pots made out of newspaper. (A wooden form for making these pots is often offered in seed catalogs.) It is easy to place the plant and pot in the ground at the same time, but DO tear one side of the paper, as some plants don't always "breakout" on their own and need some help otherwise plant growth is restricted.

There is also a perennial sweet pea, but it does not have a strong sweet aroma, that has pink blooms.

The variety 'Cupid' grows nicely in a hanging pot. Please do try growing Sweet Peas this summer. They will fill the air with a luscious scents for your growing pleasure.

Happy Gardening!

Horticulture

Carol Larson

As your new Horticulture Chairman, I want to say thank you to Nancy Gotham for her many years of educating and encouraging us to grow better horticulture. We appreciate her dedication to *Wisconsin Gardens*.

This chairman will alternate columns with Design Instructor Liz Murken to bring a balanced perspective to our growing and showing. As a seasoned gardener, I would encourage you to share your expertise with newer gardeners and most especially children. It will renew your sense of wonder. We all started somewhere, and there is always room for one more idea, one more plant, and one more gift of a division start to a beginner.

Some suggestions from my experience with gardening include:

1. Keep a garden book to record new plants, correct botanical name and cultivar, price paid, where you planted it, if it was a gift, color, height etc.
2. Grow at least one new to you plant every year.
3. Walk in your garden every day to note variety of native bees, butterflies, hummingbirds. Did you know Wisconsin has 300-400 species of native bees?
4. Keep water in a low container for toads, also a place for them to shelter, which could be a flat rock with soft dirt under it.
5. A bench (mine is blue) to sit and contemplate your gardens, review possible changes, watch the progress and be thankful.
6. Greet plants given by gardening friends and family now departed and marvel how plants and gardens restore and heal our spirit.

Enjoy your garden and share the joy it brings you with someone else.



Lathyrus Odoratus or Sweet Pea

Generations Park

You Rock....WGCF!!!

At the 88th Annual Convention in Superior, Generations Park received a check for \$1,834.46!!! Everyone at Generations Park is so thrilled that it seems the birds are singing more, insects are buzzing louder and they are so anxious for new projects to begin.

The total amount we received from WGCF and other outside donations totaled \$11,994.88 during the four years that the Park was the President's Project.

We have installed the two entrance pillars with the commemorative WGCF sign on one, barrier posts with a chain for an interior gate, wood chips for Tim Glennon's project and Jake Bolgrin's picnic table area (both Eagle Scout projects). We gave Eric Pursifull money for plants for the new butterfly garden (another Eagle Scout project).

I'm still looking into constructing a council ring for Generations Park but need to find a grant to match funds to insure I have enough for this large project. Since I'm on the Town Board Park Committee I will be involved in budgets for maintenance, more plants for landscaping the front entrance and a shed to store park tools. I have and will continue to keep the funds from WGCF separate from the town board in a Friends of Generations Park bank account. Please feel free to ask any questions and if your club would like a tour, please let me know.

Thanks for all your support and like I said, "WGCF Rocks"

Diane & Joe Powelka,
President's Project Co-Chairs , 2011-15



Eric Pursifill (center of photo) is giving directions on the placement of plants in the butterfly garden restoration that he is working on for his Eagle Scout project. About 2 dozen Scouts and another half dozen adults worked at various times on the project.



MILWAUKEE DISTRICT

WELCOMES

Our New Executive Board

Director	Lynne Ehnert
First Vice Director	Lynda Curl
Second Vice Director	Jenni Garcia
Treasurer	Veronica Wallace-Kraemer
Recording Secretary	Laura Skoff
Corresponding Secretary	Linda Reuss



The past (photo above) and present (photo below) entrance to Generations Park.



REGISTRATION FORM
Landscape Design School Series X - Course IV

September 23 - 24, 2015
First Baptist Church

NAME: _____

PHONE: _____

ADDRESS: _____

CITY/ST/ZIP: _____

DISTRICT/CLUB: _____

E-MAIL: _____

- Fees:
- Both Days ----- \$60
 - Both Days After Sept 1 ----- \$65
 - One Day ----- \$45
 - One Day After Sept 1 ----- \$50
- Choose date: Sept 23 or Sept 24
- Optional but Required for NGC Credit Refresher* ----- \$5
 - Exam* ----- \$5

ADVANCE LUNCH RESERVATIONS ONLY

- Wednesday Sept 23 ----- \$14
- Thursday Sept 24, ----- \$14

Your confirmation by E-mail? Yes/No

Total Enclosed / Check Number

Please make check payable to:
WGCF Landscape Design School

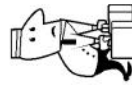
See mailing instructions →→→

CONTACT INFORMATION

Local Chairman: Vern Lowell
3435 State RD 78 | Mt. Horeb, WI 53572-1341
☎ (608) 437-8764 | ✉ vlowell@mhtc.net

WGCF Chairman: Gretchen Vest
704 Spring Dr. | West Bend WI 53095-4642
☎ (262) 338-6645 | ✉ gretchenvest@aol.com

WGCF President: Gerianne Holzman
7437 Terrace Ave Middleton, WI 53567
☎ (608) 345-6097 | ✉ geriannewgcf@gmail.com



AVAILABLE LODGINGS

AmericInn ☎ (608) 662-1990
516 Grand Canyon Drive | Madison WI 53719
Rate: \$85.00 ONLY UNTIL SEPT 1, 2015
Use code: WGCF OR Landscape School
Rate not guaranteed after Sept 1, 2015

America's Best Value ☎ (608) 226-9999
3438 US Highway 12 & 18 | Madison WI 53718

Madison has many events, so to ensure a room, please make your reservations promptly!

☎ Mail Check & Registration to:

Pat Anderson, Registrar ✉
4729 Lafayette Dr. | Madison, WI 53705-4827
☎ (608) 231-2731 | ✉ pata4729@gmail.com

No Refunds after Sept 5, 2015. A 25% handling fee will be retained on all cancellations.

LANDSCAPE DESIGN SCHOOL
SERIES X - COURSE 4

September 23 - 24, 2015

First Baptist Church
518 N. Franklin Ave
Madison, WI 53705-3699
(608) 233-1800



SPONSORED BY:
WISCONSIN GARDEN CLUB
FEDERATION
www.wisconsinclub.org

Gerianne Holzman, WGCF President
7437 Terrace Ave.
Middleton, WI 53562
(608) 345-6907
geriannewgcf@gmail.com

This Course is Open to the Public

LANDSCAPE DESIGN SCHOOL
 SERIES X- COURSE 4
 Class times subject to change due
 To instructors schedules

WEDNESDAY SEPT 23, 2015

8:00 a.m. - 8:25 a.m.Registration
 8:25 a.m. - 8:30 a.m.Announcements
 8:30 a.m. - 9:30 a.m.Shelly Strom
 *History and Development of Community Gardens
 9:30 a.m. - 10:30 a.m.Jared Vincent
 *Community Participation-Organization and Individual Responsibility
 10:30 a.m. - 10:45 a.m.Break
 10:45 - 11:45a.m.Catherine Dammann
 *Development of Landscape Architecture from World War II to Present
 11:45a.m Lunch (Reservation Required)
 12:30 p.m. - 3:30 p.m.Paul Skidmore
 *Evaluating the Landscape Designs of Residential, Public and Business Property

THURSDAY, SEPT 24, 2015

8:00 a.m. - 8:25 a.m.Registration
 8:25 a.m. - 8:30 a.m.Announcements
 8:30 a.m. - 9:30 a.m.Caitlin Blue
 *Design for the Future
 9:30 a.m. - 10:30 a.m.Aron Williams
 *Redesign of Areas
 10:30 a.m. - 10:45 a.m.Break
 10:45 a.m. - 11:45 a.m.Molly F. Murray
 Landscaping for Wildlife
 11:45a.mLunch (Reservation Required)
 12:30 p.m.-1:30 p.m.Doug Hadley
 *Contemporary Landscape Design
 2:00 p.m. - 3:00 p.m.Exam Review
 3:00p.m. - 5:00p.m.Exam (optional)

*Examination to be given on these topics
 Plus *The National Gardener* Article

INSTRUCTORS

Doug Hadley, Landscape Architect
 Instructor University of Wisconsin
 Catherine Dammann, Landscape Architect
 Instructor University of Wisconsin
 Molly Fifield Murray
 UW Arboretum Outreach Mgr
 Jared Vincent, Landscape Architect
 Ziegler Design Associates
 Caitlin Blue, Landscape Architect
 SSA Design Group
 Aron Williams, Landscape Architect
 SSA Design Group
 Paul Skidmore, Landscape Architect
 Shelly Strom, Land and Garden Director,
 Community Groundworks

REQUIRED READING LIST

Stewards of the Land
 Chapters 20, 21, 26, 31, 33, 36,
 History and Development of Community Gardens:
 A Brief History of Urban Garden Programs in the
 United States by Laura Lawson available at:
<http://lilawson.rutgers.edu/assets/pdf/UGPlecture.pdf>
 The National Gardener Magazine is required

**HOW TO BECOME ELIGIBLE FOR A
 LANDSCAPE DESIGN CONSULTANT**

- Student attendees must:
- 1) belong to a garden club affiliated with a state garden club in NGC.
 - 2) have a passing grade of 70% on all exams in the 4 courses.
 - 3) complete all 4 courses between 2 to 7 years. Courses may be taken in any order or back to back.

FOR OUR NON-MEMBER STUDENTS

- 1) Courses and exams are open to everyone.
- 2) Consultant Certification Cards are issued only to members of NGC.
- 3) Non-member students successfully completing all (4) courses may apply for Consultant Certification upon joining an NGC affiliated Federated garden club within 6 months after series completion.
- 4) Certificates of Completion are awarded to non-NGC students attending a full series.

REFRESHER CREDIT

Refresher Credit for Consultant and Master Consultants are granted within one to five years following receipt of Consultant or Master Consultant Certification.

★★ NGC 4-STAR & 5-STAR MEMBERS ★★

NGC 4-Star Members are honored after completing all (4) NGC educational programs.
 NGC 5-Star Honorees must refresh to the master level in all (4) programs.

DATES TO REMEMBER

SEPTEMBER

- 15-19 NGC Fall Executive Board Meeting, St. Louis
- 18-19 Environmental Studies School, Mequon
Series V, Course 4
- 22-23 Landscape Design School, Madison
Series X, Course 4

OCTOBER

- 3-5 Central Region Meeting, Cedar Rapids, IA
- 15 WGCF Executive Committee Meeting, Osthoff
Resort, Elkhart Lake

2016

FEBRUARY

- 12-14 Garden Expo, Madison
- 17 WGCF Awards Committee – Wausau area
- 18 WGCF Executive Committee – Wausau area

MAY

- 2-7 NGC Convention, Grand Rapids, MI
- 15-17 WGCF Convention, Osthoff Resort, Elkhart Lake

In Memoriam

Anne Coisman, 100 years old, passed away on June 29, 2015 in Brownsville, TX. She spent most of her life in Door County. She taught school for many years and then after retiring, was a substitute teacher. For 35 years Anne led the 4-H programs in the area. She was also very involved in her church and community.

After retiring from the farm, which she loved so very much, Anne and her husband Harry spent winters in Brownsville, Texas. Anne was an avid flower gardener and a member of the Sturgeon Bay Home and Garden Club, West Brownsville Garden Club and the Ivy League Garden Club of Sheboygan. Her floral arranging skill won her many awards at flower shows. She was a life member of the National Garden Clubs and the Wisconsin Garden Club Federation. Many WGCF members recall her floral arrangements and how Anne liked to return to Wisconsin for the Annual Convention.

A funeral service will be held on July 25 at 10 a.m. at Holy Mother of Mary Church in Maplewood, WI

Memorial Scholarship Fund Donations

Please make checks payable to
WGCF Scholarship Fund
c/o Community Foundation for the
Fox Valley Region, Inc.
4455 West Lawrence Street,
Appleton, WI 54914



The enclosed donation of \$ _____ is designated for the WGCF Scholarship Fund.

CLUB NAME _____ DISTRICT _____

DONOR NAME _____ PHONE _____

ADDRESS _____

INDIVIDUAL/CLUB DONATION - MONEY TO BE SPENT IN CURRENT YEAR

DONATION TO REMAIN ANONYMOUS

DONATIONS APPLIED TO PRINCIPAL

INDIVIDUAL/CLUB DONATION

WISCONSIN LIFE MEMBERSHIP

IN HONOR OR IN MEMORY OF:

NAME: _____

ADDRESS: _____

SEND ACKNOWLEDGEMENT TO:

NAME: _____

ADDRESS: _____

CONGRATULATIONS

TO

GRETCHEN VEST

New Sheboygan District Director

From your fellow members of

Ivy League Garden Club

Sheboygan District





wisconsingardenclub.org

Deadline for Fall Issue: September 1

Submissions Welcome

Publication approximately October 1, delivery by October 15

Due to the variability of bulk non-profit postage delivery, WGCF and *Wisconsin Gardens* takes no responsibility of late delivery of event announcements. Please plan accordingly.

Coming in the Fall 2015 Issue: Garden Study; NGC, CR and WGCF Life Members; Scholarships; Smokey Bear/Woodsy Owl; Youth Activities. Articles also needed by members, please consider writing about your garden, activities, club projects, etc.

Looking out my window, I see too many green things growing in the wrong places – perhaps they are weeds, maybe they are perennials that have decided to expand beyond my plans. Or maybe I should just admit that I've let myself get too busy to keep up with the tending of this garden?! As I look at these “extra” or “uninvited” plants, I find myself reflecting on the excitement of the children in summer school gardening class. For them, all plants in their school garden were a new, joyful beginning with untold promise ahead.



During the first week of summer school, the children wore a name tag made of a small plastic bag with a bean seed and a moist cotton ball inside. Each day when the name tags were handed out, they were quick to check their own bean. What joy they expressed as their beans began to sprout! Their bean sprouts (along with two extra seeds for assurance of success) were planted in the school garden and marked with their name on a popsicle stick nearby. The student's anticipation of the growth of their own seeds and everything in the school garden, especially the rows they helped to plant, was a daily part of this class and their enthusiasm over discovering new growing plants – whether they were vegetables or weeds – was all part of the experience.

Another aspect of this class was the children's desire to touch, smell and taste, when possible, all the vegetables or flowers they encountered – not just merely giving them a quick glance, as I might do. And as a consequence, I find myself touching, smelling and feeling the plants in my gardens.

So, who learned more during this class? As I look out my window today, rather than focusing on what is wrong or what needs to be tended, I'm going to head out to this garden and enjoy the texture of the leaves, the different fragrances of the flowers and vegetables and savor the berries ready to be picked. Hope you can do the same throughout this season.

Carla

Editor: Carla Von Haden

wisconsingardens@centurytel.net
1504 Academy St., Elroy 53929
608-462-5239

Assistant Editor: Anita Voiles

anita.voiles@ymail.com
852 162nd St Hammond 54015
715-796-2786

Circulation: Maureen Wild-Gordon

742 Oak Ridge Rd.
Oregon, WI 53575
608-287-6501
wildgordon@prontomail.com

Advertising: Anita Voiles

anita.voiles@ymail.com
852 162nd St Hammond 54015
715-796-2786

Contributors: Karmyn Brown, Kathy Casberg, Lynne Ehnert, Nancy Gotham, Gerianne Holzman, Elvera Jacot, Wendy Kramer, Carol Larson, Sylvia Lowell, Vern Lowell, Dawn Mozgawa, Liz Murken, Judy Newman, Diane Powelka, Joe Powelka, Lynnette Rakun, Pat Ritchie, Judy Salzwedel, Julie Schoenike, Gretchen Vest, Kay Villa, Carla Von Haden, Sue Wallace, Ginger Wierman

*Published quarterly at Elroy,
Wisconsin by the Wisconsin Garden
Club Federation, member of National
Gardens Clubs, Inc.*

Supported by Club Membership. Subscription price \$6.00 per year, single issue copies \$2.00.

Distribution: 1200

Editor reserves the right to edit contributions for size and content.

Printed by EconoPrint Verona, WI