



Volume 70, Issue 3
Summer 2019

Wisconsin Gardens

Opportunities for Fall 2019

WGCF members have many opportunities for education and friendship during the Schools being offered in the Fall of 2019.

Flower Show School, Course 4

will be held on September 6-8 in Sheboygan.

Topics include: Flower Show Procedures, Horticulture and Design.

Instructors will be David Robson and Lynn Fronk.

Registration form and brochure are on pages 15-16.

Environmental School, Course 3

will be offered in Middleton on October 18-19.

As soon as the speakers are finalized, a brochure will be sent to prior attendees, Tri-Council members and posted on the WGCF website. Course 3 covers “Air” and related issues included the rain forest, pollution, endangered wildlife, environmental education in schools and of course a wonderful field trip. Please check the WGCF website later this summer for more information.

Gerianne Holzman, Environmental School Chair

IN THIS ISSUE			
President’s Message	2	In Memoriam	14
Convention Highlights	3	Flower Show School	15-16
Awards	4-7	WGCF Grants	17
Scholarships	8-9	Bulb Sale	18
News from Clubs in Wisconsin	10	Dates to Remember	19
Financial Status	13	Forms for Donations	19

Gardening for Good

Education

Service

Friendship



WGCF is a not-for-profit educational organization founded in 1928. It is a member of National Garden Clubs, Inc.

Mission: WGCF provides education, resources and opportunities for its members to promote and share the love of gardening, floral design, civic and environmental responsibility.

WGCF 2019-2021 Officers:

President: Lynne Ehnert
W143 N6828 Aspen Dr.
Menomonee Falls, WI 53051-0925
262-251-0452
lehnert@wi.rr.com

First Vice President: Laura Skoff
W131 N8030 Country Club Dr.
Menomonee Falls, WI 53051
414-614-6489
lauraskoff@gmail.com

Second Vice President: Linda McCafferty
443 Woodview Drive
Sun Prairie, WI 53590
608-837-2675
lkmccm@gmail.com

Recording Secretary: Carla Von Haden
1504 Academy St.
Elroy, WI 53929
920-901-3811
carlav8@centurytel.net

Membership Secretary: Susan Johansen
2249 122nd St.
New Richmond, WI 54017
715-781-6825
h23j19@gmail.com

WGCF Treasurer: Mary Jane Hull
709 Brookstone Crest
Mount Horeb, WI 53572-3393
608-437-2478
hullmary249@gmail.com

Central Region Director: Jodi Meyer

NGC President: Gay Austin
NGC Headquarters:
4401 Magnolia Avenue
St. Louis, MO 63110

President's Message



As we begin another term with WGCF, there are new beginnings for all of us. Many of us have taken on new roles, some have continued in the same role, but things are still changing. Change is sometimes difficult, but it is inevitable. My thought process is that we may need to make some changes to ensure we have a solid organization, but we should continue to evaluate where we have been. We need to look at what worked, and what did not work for the organization. In doing so, hopefully we will end up in a good place; remembering it is important to keep our members and find a way to increase our membership. In order to do that, we will need everyone's help. We are looking for your thoughts and ideas. We have several positions on the board open where we are still looking for volunteers. Some are on committees; others are organizing schools or writing articles. Filling these positions is essential to getting organization running smoothly. Everyone has a different talent; please share your talent. It is important to hear from you.

This term we plan to "Leaf Out Wisconsin" with a project called "Little Sprouts for Saplings". We have lost many of our trees in Wisconsin because they were damaged with disease, by weather conditions, and pests. The plan is to work with the youth to plant trees and replace many of the trees that we have lost within the state. Each district can work in their own area. In doing so, we will support the NGC Plant America Theme, our garden clubs' partner with our youth to develop interest in the environment, we will educate our youth, and we will replace, replenish and help with reforestation. We will also have a publicity opportunity to show how much fun we are having by posting pictures to our website. At each of the district meetings, we brainstormed ideas for connecting with youth and getting trees for the project. To have a little fun with the project, there will be a contest. The contest details are:

- Contest Dates: 6/15/19 - 5/1/2021
- Age of Youth: <= Age 18
- Points Awarded:
 - o One Point for planting a tree
 - o One extra point if tree is planted in a public place
 - o One extra point if tree is planted with youth and a picture is posted WGCF website
- Pictures to be posted to WGCF Website (don't forget release is needed)
- Winner: Determined by the greatest % of trees /club member based on 5/2021 membership
- Winner to be announced at WGCF Convention

Each club will report the number of trees planted to the District Director for each Exec Meeting (February, June and October). Watch the website to track how we are doing.

Lynne

ADVERTISING RATES

Size	WGCF	Other
Full page	\$150	\$200
Half page	\$75	\$100
Quarter page	\$37.50	\$50
Bus. Card	\$20	\$20



NGC President Gay Austin and WGCF President Peggy Grubbs



Our WGCF leaders enjoying Convention!

2019-2021 WGCF OFFICERS

WGCF Officers for 2019-2021 were installed during the Annual Convention, and they are: *(front row, left to right)* Linda McCafferty, Second Vice President; Lynne Ehnert, President; Laura Skoff, First Vice President; *back row:* Kitty Larkin, Parliamentarian; Mary Jane Hull, Treasurer; Susan Johansen, Membership Secretary; Carla Von Haden, Recording Secretary; and NGC President Gay Austin.

2019 CONVENTION HIGHLIGHTS



Sharon McGukin presented an interesting program on floral design, sharing many ideas, materials and techniques that she uses in her creations. The floral designs were auctioned off during the Convention. (photos above and right)



Congratulations to 2019 Award Winners



LYDIA SHAFER AWARD
*presented to
 Gerianne Holzman
 of Madison District
 by WGCN President Peggy Grubbs*



**GARDEN CLUB OF THE YEAR
 AWARD**
*Lake Wissota Garden Club
 of St. Croix District
 WGCN President Peggy Grubbs with
 Club President Barb Barrickman*



BRONZE AWARD
*presented to
 Larry Meiller
 of Wisconsin Public Radio
 by WGCN President Peggy Grubbs*



Knox Visibility Award
*presented to
 Sugar River Garden Club
 WGCN President Peggy Grubbs
 & Judy Niederberger of Sugar
 River Garden Club*



**Murken Memorial
 Scholarship Fund Award**
*presented to
 Fox River Valley District
 District Director Pat Ritchie with
 WGCN President Peggy Grubbs*



**Kuether District
 Membership Award**
*presented to
 Sheboygan District
 District Director Gretchen Vest with
 WGCN President Peggy Grubbs*

AWARDS ANNOUNCED DURING ANNUAL CONVENTION

Creative Horticulture Achievement Award

Debra Koenig of Milwaukee Art Museum Garden Club

Ruth West Horticulture Award

Bay Gardeners Garden Club of Indianhead District

Pat Dvorak Yearbook Theme Award

Botany Belles and Beaus Garden Club of St. Croix Dis-



Flower Show Achievement Award - Standard for "Thyme for Fun" Floral Designers of Wisconsin, accepted by Kitty Larkin



Flower Show Achievement Award - Small Standard for "Celebrating 50 Years" Botany Belles & Beaus Garden Club accepted by Wendy Kramer



Flower Show Schedule Award Town & Country Garden Club for "School's Out" submitted by Judy Newman, accepted by Lynda Curl



Dorothy Nelle Sanders Award Small Standard Botany Belles and Beaus Garden Club, accepted by Wendy Kramer



Wisconsin Judges Council Educational Award Town & County Garden Club for "Invite a Frog into Your Garden" submitted by Helen Surridge accepted by Lynda Curl



Ruth Smith Evaluation Award presented to Carol Catlin, submitted by Helen Surridge

"And Then Some" Award Winners

Coulee District
Fox River Valley District
Indianhead District

Peg Culpitt
Judy Pitcher
Mary Coda

Madison District
Milwaukee District
St. Croix District
Sheboygan District

Chuck & Linda McCafferty
Andrea Bryant
Angie Simon
Connie Gross



Judy Pitcher with Peggy Grubbs



Chuck & Linda McCafferty with Peggy Grubbs



Connie Gross with Peggy Grubbs

YEARBOOK PLACINGS

CLUBS with 12 Members or Less

Floral Designers of Wisconsin Garden Club 2nd place

CLUBS with 13-17 Members

Elmbrook Garden Club, Brookfield 1st Place
 Bay Gardeners Garden Club, Superior 2nd Place
 Town & Country Garden Club, Milwaukee 3rd Place

CLUBS with 18-22 Members

Paper Valley Garden Club, Appleton 3rd Place
 Wisconsin River Garden Club, Wisconsin Rapids Honorable Mention
 Bangor Garden Club, Bangor Honorable Mention
 Lake Superior Garden Club, Superior Honorable Mention

CLUBS with 23-29 Members

Oshkosh Garden Club, Oshkosh 3rd Place

CLUBS with 30-39 Members

Lake Wissota Garden Club, Chippewa Falls 1st Place

CLUBS with 40 or More Members

Green Thumb Garden Club, Fond du Lac 1st Place
 Lake Shore Garden Club, Sheboygan 2nd Place

SMOKEY THE BEAR POSTER CONTEST WINNERS - WGCF

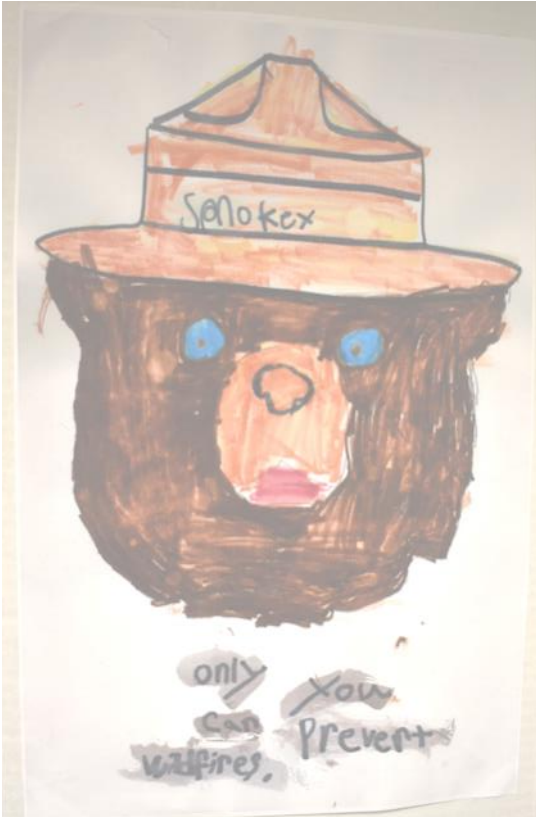
First Grade	Sophia Lowe	St. Edward School, Appleton
Second Grade	Maximo Geniesse	St. Edward School, Appleton
Third Grade	Maddy Geiger	St. Edward School, Appleton
Fourth Grade	Jylian Spranger	St. Edward School, Appleton
Fifth Grade	Jackson Van Straten	St. Edward School, Appleton

**All entries were submitted by Paper Valley Garden Club of the Fox River Valley District

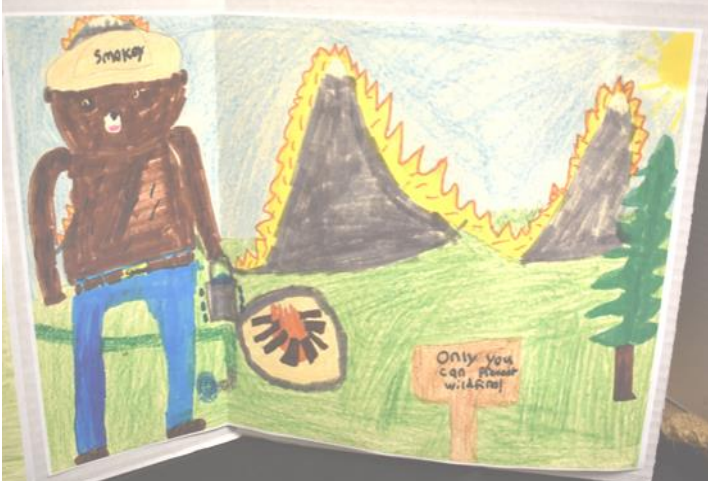
Smokey the Bear Poster Contest - Central Region

First Grade	Sophia Lowe	Honorable Mention
Second Grade	Maximo Geniesse	Honorable Mention
Third Grade	Maddy Geiger	2nd Place
Fourth Grade	Jylian Sranger	2nd Place
Fifth Grade	Jackson Van Straten	3rd Place

SMOKEY THE BEAR POSTER CONTEST WINNERS - WGCF



Posters by:
 Sophia Lowe First Grade (above)
 Jylian Spranger Fourth Grade (below)



Posters by:
 Maximo Geiesse Second Grade (top)
 Maddy Geiger Third Grade (middle)
 Jackson Van Straten Fifth Grade (below)



CONGRATS TO OUR 2019 SCHOLARSHIP RECIPIENTS

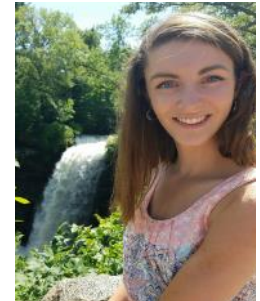
by Mary Ellen Sedlachek

This year our committee consisted of Wendy Kramer, Lynne Slat, and myself. We had fifteen applicants for our ten state scholarships and one applicant for our national representative who was deemed ineligible due to financial assistance until employment success.

The **Myrtle Olgilvie Scholarship at \$1,000** for an underclassman was awarded to Eliza Suchan, a senior from Whitelaw attending Manitowoc Lincoln High School. She will attend the UW–Manitowoc, to study Horticulture.



The **Irene Strauss Scholarship of \$1,000** will be given to Emily Kolbe, a junior from Greenville, at UW–River Falls, studying Horticulture with Professor David Zlesak, intending to become a rose breeder.



Five WGCF Scholarships of \$1,000 each were awarded to:

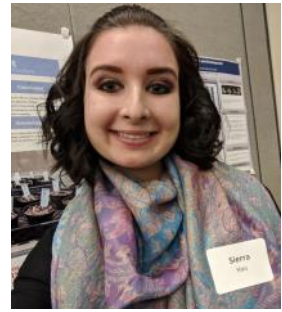


Christina Bartelme, a graduate student from Manitowoc, studying Environmental Science at UW–Green Bay.

Paige Berhardt, a senior from Eau Claire, studying Landscape Architecture, Geography and Environmental Studies at UW–Madison.



Sierra Hau, a junior from UW- River Falls, studying Horticulture.



Lucy Kailhofer, a sophomore from Kaukauna, studying Horticulture at UW- River Falls.

Alexis Schultz, a sophomore from Watertown, studying Agronomy at UW- Madison.



The Della Balousek Scholarships of \$2500 each were awarded to:



Keegan Bruins, a sophomore from Brandon, studying Agri-Business at UW-Platteville.

Carly Flunker, a sophomore from Sobieski, studying Environmental Science at UW-Green Bay.



Morgan Pettit, a junior from Merrill, studying Horticulture at UW-Madison.

News from Clubs around the State

Spooner Garden Club

Submitted by Diane Hagler

For their July meeting, members of the Spooner Garden Club visited the farm of Sherry Sutton, owner of Chickadee Hills Homestead. This farm is a local sustainable pasture-raised heritage hog farm located in Spooner. During their visit, members learned about soil ecology and enjoy seeing free Range chickens, guinea hens and Magalita hogs, known as the Kobe (beef) of hogs.



Spooner Garden Club members visited the Tommy G. Thompson Fish Hatchery in Spooner as part of their June meeting. The Fish Hatchery is not only the state's largest cool water facility, it is the world's largest musky (muskellunge) hatchery. In many years, the hatchery produces more than half the muskellunge and walleye stocked throughout the state. With 46 rearing ponds, the facility may produce 200,000 to 2.5 million small walleye; 100,000 to 350,000 larger walleye; 35,000 to 60,000 large musky; and an average of 21 million white sucker fry in a typical year.



Paper Valley Garden Club

Submitted by Alyssa Nelson

My family always plants trees at our hunting land every year and this year it got delayed due to the weather which is a benefit to our tree planting competition! We still enjoyed planting 25 spruce, 2 pines and 25 oak.



Appreciating Our Legacy

Submitted by Pat Ritchie

The Weyauwega Area Historical Society received scrapbooks and other things from the Weyauwega Garden Club which was in Weyauwega from 1957-1984. This month we have a display of the scrapbooks and other items to honor this garden club.

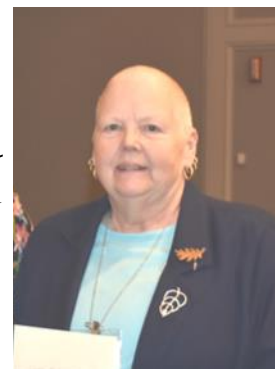
Whitefish Bay Garden Club

If you are a Facebook user and enjoy reading articles on new ideas or innovations, or enjoy seeing beautiful photos, you can "LIKE" the Whitefish Bay Garden Club's site, and you'll be able to read notices each week that are helpful, hopeful, and deal with environmental concerns.

Great job, Whitefish Bay Garden Club!! Your Facebook site is being enjoyed!!

Meet our WGCF Second Vice President Linda McCafferty

My adventures with WGCF began in 1991 when I was asked to join Sun Prairie Garden Club; six months later I was nominated to run as Treasurer. As a consideration for accepting that nomination, I requested that another Club member oppose me; Joe Powelka kindly agreed. Little did I realize that during the month between nominations and elections, Joe actually campaigned for me and, surprise, I was elected. And so it began. I held that position for six years. Apparently because of my organizational skills and attention to detail, Diane Powelka who was running for Madison District Director asked me to be her Vice Director and, eventually, Director with Sylvia Lowell as my Vice Director; what an honor to serve with such patient and talented mentors. My wonderful friends in the District convinced me that in order to be District Director, it was a prerequisite that I serve as a Club President and since I had not filled that position first, I needed to do so after; and, before I could be Club President, I needed to serve as Club Vice President. At this point I had been a Club member for several years and one would think that I would have been wise enough to see through those “requirements” but apparently I wasn’t. I am currently Club Secretary, a position I resisted for many years because, for me, it was too much like the work I did every day in the legal field. Ten years of retirement must have softened that position.



Because of my involvement with the American Legion Auxiliary and VFW Auxiliary providing assistance to Veterans and active military personnel and their families, 2009 WGCF President Judy Pitcher asked if I would be interested in being Chair of the Blue Star Memorial Committee. I agreed, provided my husband could act jointly with me, proposing I take care of the paperwork and he use his communication skills which he has perfected so well over the years! This position we still currently hold is a perfect fit for our lives which involve all things military.

I tend our flower beds with Chuck doing the heavy work. When I retired ten years ago, my two granddaughters began attending “Gramma Camp” for three or four days each week in the summer. At lunch one afternoon, I asked “The Girls” if they knew where vegetables came from and they responded, “The store.” “Well, they do,” I said, “but first they have to be grown somewhere and then sent to the store.” Thus began our experience with vegetable gardening. Each year the three of us would discuss what to plant; The Girls helped plant, weed and the most fun of all, harvest. As they became older, we talked about the attributes of different varieties and what was the best for us to plant in our vegetable garden. After they had been away for a bit, The Girls were always so excited to check out the garden to see how much a plant had grown or what was ready to pick and eat. In fact, in 2015 Chuck and I took The Girls and our daughter to Disney World and on a short Disney Cruise. When we came home, the first thing The Girls did after getting out of the car was grab the vegetable baskets from the garage and pick what was ready in the garden!

I cultivated many dear and wonderful friendships and learned everything I know about gardening through my involvement with garden club. As a member of the Executive Board, I am looking forward to that same kind of mentorship I was lucky to receive on a Club and District level as I learn to perform the responsibilities of each position going forward. Hopefully, I will not disappoint anyone.

Milwaukee District Garden Clubs

Congratulate

Our New State Officers

President Lynne Ehnert

and

First Vice President Laura Skoff



Best Wishes!

We're so proud of you!!

**THE LEGACY OF
LYDIA SHAFER**

Submitted by Lucy Valitchka

Lydia Shafer served as WGCF President from 1961-1963. She literally willed herself to live until the 1963 State Convention had come and gone, and the reigns of the Federation had been transferred to a new President. During the several years that she served as State Treasurer, Vice President, and President, the Federation and her responsibilities to it were her main concern. Immediately before her long bout in the hospital early in 1963, she assembled many pages of "Duties of Chairmen" which appeared in Wisconsin Gardens. She never gave up hope that she would be able to attend each meeting as it came along, and although she didn't manage to get there in person, she kept in touch, and she was there in spirit.

Lydia passed away in October, 1963. Her only survivor was her husband. Their only son, died in 1944, at the age of 17, from injuries suffered in the Wisconsin-Iowa football game. Mr. Shafer established the Lydia Shafer Award to honor his wife's devotion to WGCF.

In the same courageous way that she handled her physical difficulties in the last year of her life, she took life in her stride with the loss of their son. The Shafers aided many students with awards at Madison West High School, and at UW-Madison.

Lydia was a member of the Little Garden Club, the African Violet society, and the Garden Center Club, all in Madison.

The following is an excerpt from her farewell message as President of WGCF:

"I would like to take this opportunity to thank each club and every one of you for the fine cooperation you have given me in the seven years I have served as a state officer. We are a small Federation, yet we have accomplished a great deal through the hard work of our members and the spirit of helpfulness they have shown each other. Gardening carries with it a spirit of friendliness and a desire to help one another and it is through working well together that we have accomplished what we have for our communities. With Sears, Roebuck Foundation we have set up a special project on beautification. As a state Federation we support Nature Conservancy. We have worked hard on various legislative materials, whether they had to do with billboards, auto graveyards, or bald-headed eagles. We are well known for our work in conservation."

Financial Status of WGCF

by Mary Jane Hull, WGCF Treasurer

The 2018/19 Final Treasurer's Report will be approved by Executive Committee in July. Copies of the report are available from the Treasurer (address on page 2), any District Director or any Executive Committee member. Actual income/expense vs. budget will appear on our Website after July.

Here's a brief recap of items of significant interest:

Membership Dues for 2018-19	\$9,362.	(1041 members)
Events:		
GFG River Rondezvous	Income: \$14,162.	Expense: \$15,303.
Annual Convention	Income: \$9,866.	Expense: \$12,329. Tisket-Tasket: \$751.
Fundraising	Sale of Garden Journals: \$240.	
Miscellaneous Income	\$2,879. (Interest; capital gains, dividends)	
President's Project	Income: \$4,546.	Expense (to date): \$1,470.
Expenses for Officers' travel allowance, meeting expenses		\$15,303.
Website		Expense: \$894.
Awards/grants		Expense: \$3,338. (includes Lydia Shafer Award)
Wisconsin Gardens Magazine	Income: \$1,235.	Expense: \$3,404. (4 issues)
Ruth West-WGCF Education fund	Fund is at \$12,000.	
	\$600. was used to support our schools; \$1,140. was used to support October Gathering for Gardeners;	
	\$180. was received in donations	

WGCF Fund Raiser

Bulb Sale

by Lynne Ehnert

The order form for the WGCF fund-raiser is on page 18. The bulbs are from Van Engelen.

We selected 8 different bulbs for the sale from different zone and different varieties. Bulbs are in sets of 10 for each order.

The bulb sale goes from now through **September 7, 2019**. Please group your orders together (if possible). The order form has a place for the group or club name at the top.

Bulbs will be delivered to the District Directors at the Fall Executive Meeting in October.



Photos of all bulbs that can be ordered are on page 18.

IN MEMORIAM



Members of WGCF and Milwaukee District were saddened by the recent passing of Carole Hopp.

Carole completed her life's journey and entered eternal life on July 14, 2019 at the age of 77. She is survived by her two sons: Keith (Elizabeth) Prudisch and James (Kerry) Hopp, and six grandchildren. She was retired from AG Architecture.

Carole was WGCF President from 2005 to 2007. She was a Life Member of WGCF, Central Region, and National Garden Club. Carole belonged to Elm Grove Garden Club, Mayfair Park Garden Club, and Floral Designers of Wisconsin. She served as a president for all of the mentioned clubs at one time or another.

She was a Flower Show Judge and Co-Chaired the National Convention in 2005 when Kitty Larkin was installed as NGC President. She was instrumental in getting two Blue Star markers in the Milwaukee area – one in Elm Grove and the other in Forest Home Cemetery. She was a recipient of the Lydia Shafer award.

Editor's note: When I was a relative "rookie" of WGCF, I served on the Finance Committee which Carole chaired at that time. She quickly took me under her wing to teach me the workings and organization of WGCF. I imagine that many Club members have similar memories of Carole, showing you the way, giving you a push to try something new, or saying encouraging words to help you continue on a project.

Carole will be remembered as a devoted wife and as a loving and caring Mother, "Nana"/Grandmother. She will also be remembered as a welcoming, kind-hearted person looking for the best in people or a situation. We're so grateful for Carole's friendship, dedication and leadership in WGCF!

WGCF President's Projects- Buds 'n Sprouts Program

Judy Newman President 2003-2005 & Carole Hopp President 2005-2007

Also project for Donita Bruder, 2007-2009 Milwaukee District Garden Club Project.

Connecting children with nature through gardening

The Bud 'n Sprouts Program at the Havenwoods Environmental Awareness Center, 6141 N. Hopkins Street, Milwaukee, WI assisted children in developing the lifetime skill of gardening, enhancing the personal and social skills and learning about botany, ecology, environmental issues and nutrition.

The program's purpose was for groups of urban youth (ages 7-12) who participate in local youth serving community agencies. The children who participate reflect the diversity of the city's population. The majority of the children in this program have not had gardening experiences at home. During the two-hour program each week the children: work in their own garden, take a walk in the Heritage Garden, do a theme activity, eat a garden snack, listen to a story and do some journaling.

Garden club members and clubs donated over \$5000.00 each term to support this program.

Flower Show School Course 4

- Flower Show Procedures 2 hours
- Horticulture 5 hours
- Design 5 hours

Required Reading

The following required reading list applies to all Flower Show School courses. Student Outlines provided by each course instructor.

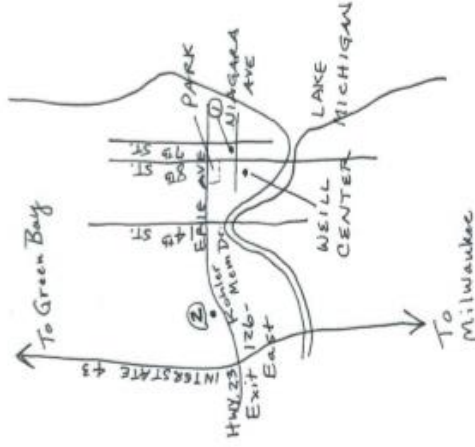
- The National Gardener Magazine*
- 1344 Handbook for Flower Shows, 2017 Revised Edition (3-ring binder) \$25.00*
- 1341 Horticulture Exhibiting and Judging \$30.00*

Recommended Reading:

- Guide to the New Petite Floral Designs*
Anna Burns
- Hortulana The 21st Century Edition*
Heber \$10.00
- Designing By Types (Osborne) \$44.00*
- Table Settings for all Seasons (Wood & Smith)*
- Plant Families for Designers Constructing Monobotanic Design*

Recommended Lodging:

- La Quinta Inn 920-457-2321
2932 Kohler Memorial Dr, Sheboygan, WI
(6 minutes from Weill Center)
- Grand Stay Residential Suites 920-208-8000
708 Niagara Ave, Sheboygan, WI
(1 block from Weill Center)



FLOWER SHOW SCHOOL

COURSE IV, SERIES IX
SEPTEMBER 6-9, 2019
 WEILL CENTER FOR THE
 PERFORMING ARTS
 816 NORTH 8TH ST
 SHEBOYGAN, WI 53081



SPONSORED BY:
 WISCONSIN GARDEN CLUB
 FEDERATION
 IVY LEAGUE GARDEN CLUB

PROGRAM SCHEDULE

Friday, September 6, 2019

- 8:00-8:25 Registration
- 8:25-8:30 Announcements & Introductions
- 8:30-9:30 Flower Show Procedure – David Robson, Instructor
- 9:30-10:30 Horticulture – David Robson Instructor
- 10:30-10:45 Break
- 10:45-12:30 Horticulture Instruction
- 12:30-1:30 Lunch
- 1:30-3:45 Horticulture/Point Scoring Practice
- 3:45-4:00 Break
- 4:00-5:00 Horticulture Point Scoring Exam

Saturday, September 7, 2019

- 8:00-8:25 Registration
- 8:25-8:30 Announcements & Introductions
- 8:30-9:30 Flower Show Procedure, David Robson, Instructor
- 9:30-10:30 Design, Lynn Fronk, Instructor
- 10:30-10:45 Break
- 10:45-12:30 Design Instruction
- 12:30-1:30 Lunch
- 1:30-3:45 Design Instruction & Point Scoring Practice
- 3:45-4:00 Break
- 4:00-5:00 Design Point Scoring Exam

Sunday, September 8, 2019

- 9:00-12:00 Written Exam

INSTRUCTOR PROFILES

David Robson is a retired horticulture and pesticide safety specialist with the University of Illinois. A graduate of Iowa State University and the University of Illinois, he has taught more than 37 years.

He is an NGC Flower Show School and Symposium instructor, teaching Horticulture and Flower Show Procedure. He worked on the 2017 *Handbook for Flower Shows*, and the NGC *Horticulture Exhibiting and Judging* book. He currently serves on the NGC Flower Show Schools Committee as Chairman of Horticulture and Flower Show Procedure Instructors. He'll be teaching Judging etiquette; FS Achieve-Ment Award; Division Requirements; Schedule writing; growing & showing Zinnias & Rex Begonia.

* * * * *

Lynn Fronk is a NGC Master F S Judge, F S Schools Design and F S Procedure Instructor. She has taught in 40 states, Mexico, and several South American countries. She has judged the Philadelphia F S, Newport F S and the Rhode Island F S. She is currently the Immediate Former President of G C of Ohio; serves as Symposium Chm. She is the Accrediting Chm. for the F S S committee for NGC.

Lynn is a member of Serendipity G C, Creative Arrangers Guild, Great Lakes Atelier Floral Design Group, and National Flower Arrangers Guild. She is a retired nurse from Children's Hospital and is active in many community activities such as Beaux Arts of the Columbus Museum of Art, Childhood League Assisting Board IX and the Columbus Polymer Clay Guild. She is the author of "Merry Christmas From My House to Yours". A small booklet on "Using Natural Materials for Holiday Designs."

Lynn will be reviewing the Elements & Principles of Design as they relate to Abstract Design; review the characteristics of Creative Design; Plastic Organization and Penetration of Space and Dynamic Balance; Botanical Arts Division; Botanical Arts Awards. Review Division and Section Awards; Judging qualities found on Point Scoring Form; and Design Commenting Vocabulary and Judging Procedures.

REGISTRATION FORM

NAME _____

ADDRESS _____

TELEPHONE _____

EMAIL _____

CLUB _____

DISTRICT _____

Choose Attendance type:

_____ 2 Day Course \$95.00

_____ 1 Day Only \$55.00

_____ 9/6 OR _____ 9/7

_____ Students taking the test should add an additional fee of \$5.00

Lunch Optional – Registration Required

_____ Sept 6 \$10.00

_____ Sept 7 \$10.00

_____ Total Amount Payable

Make check for total payable to WCGF Flower Show School. Send all checks to Lynnette Rakun, 6622 County Rd V, Sheboygan Falls, WI 53085. Ph: 920-946-1673

lntrakun@live.com

Deadline: September 2.

WGCF Grants

by Roger Greathead, Grants Committee Chair



WGCF Grants were presented to representatives of nine Garden Clubs: (front row, left to right) Carla Von Haden, accepting for Bangor Garden Club; Muriel Shervey, Lake Wissota Garden Club; Judy Niederberger, Sugar River Garden Club; WGCF President Peggy Grubbs; (middle row) Carol Howe, Grants Committee member; Judy Newman, Elmbrook Garden Club; Pat Ritchie, accepting for Paper Valley Garden Club; Kathy DeMets, West Side Garden Club; Wendy Kramer, Botany Belles & Beaus Garden Club; (back row) Roger Greathead, Grants Committee Chair; Lynda Curl, accepting for Whitefish Bay Garden Club, Susan Johansen, Willow River Garden Club.

2019 Grant Awards

Elmbrook Garden Club, Brookfield
West Side Garden Club, Madison
Whitefish Bay Garden Club, Whitefish Bay
Botany Belles and Beaus Garden Club, Baldwin
Willow River Garden Club, Chippewa Falls
Paper Valley Garden Club, Fox Cities
Lake Wissota Garden Club, Chippewa Falls
Bangor Garden Club, Bangor
Sugar River Garden Club, Verona

Planting for Monarchs & other pollinators at schools in area
South Side Police Station, Garden refurbishment
Silver Spring Park - plant rain garden
Hanging baskets for Main St. in Baldwin
Deerfield Gardens & planters—new plants for reflection garden
Oak Park Place – Retirement home garden
Rebuild Lafayette Town Hall Garden
Stockyard Park—Sign with planters around the sign
Edible garden



*Fox River Valley District leaders
invite you to the 2020 WGCF Convention
April 17–April 18, 2020*

Save the dates!!

Wisconsin Garden Club Federation BULB SALE due Sept 7, 2019

Club / Group Name _____

Make Checks out to **WGCF - Bulb Sale**

Phone _____

Email Questions to: contactWGCF@gmail.com

262-251-0452

Send Check and Order Form to:

Lynne Ehbert

W143 N6828 Aspen Dr

Menomonee Falls, WI 53051

PICK UP Oct 2019 Fall Board Meeting/District Luncheon

Your Name _____

Address _____

City, State, Zip _____

Phone # _____

Email address _____

THERE ARE 10 BULBS PER SET

	Bulb Name	ZONE	Quantity	Price per set	Total Price
1	Allium christophii 'Star of Persia' May-June 18-24"	4-8		\$7.00	
2	Narcissus Large cupped 'Fortissimo' April 18-20"	3-7		\$7.00	
3	Narcissus Jonquilla 'Kedron' April 12"	5-8		\$6.00	
4	Tulipa cretica 'Hilde' April/May - 7"	3-8		\$6.50	
5	Muscari Macrocarpum 'Golden Fragrance' April/May 6"	4-8		\$10.50	
6	Tulip - Triumph 'Tom Pouce' April/May 18-20"	3-7		\$6.00	
7	Tulip - Lily Flowering 'West Point' May - 20"	3-7		\$6.50	
8	Eranthis Hyemalis Winter Aconite March/April 4"	5-8		\$3.50	
				Grand Total	



1



2



3



4



5



6



7



8

Dates to Remember

2019

- September 6-8 Flower Show School
Course 4, Sheboygan
- October 15 Executive Committee Meeting
Rothschild
- October 18-19 Environmental School
Course 3, Middleton

2020

- February 18 Executive Committee Meeting
Rothschild
- April 17-18 WGCFF Convention, Appleton
“Puttin’ on the Ritz”
Hosted by Fox River Valley District
- May 11 Tri-Refresher, prior to
NGC Convention
- May 12-16 NGC Convention
“Perfect Vision”
Hosted by WGCFF
Milwaukee
- June 17 Executive Committee Meeting
- Fall Landscape Design School,
Hosted by St. Croix District
- October 14 Executive Committee Meeting

Address changes and corrections

should be sent to Membership Secretary:

Susan Johansen
2249 122nd St.
New Richmond, WI 54017
h23j19@gmail.com

Tributes, Memorials, Scholarship Donations

Tributes honor any living person for contributions to the Wisconsin Garden Club Federation. Tributes also honor members who already are life members. Funds derived from Tributes support Wisconsin Scholarships or the WGCFF Ruth West Continuing Education Fund.

Memorials honor any deceased member or friend of the Wisconsin Garden Club Federation. Funds derived from Memorials support Wisconsin Scholarships or the WGCFF Ruth West Continuing Education Fund.

Clubs or individuals may make donations to the WGCFF Scholarship Fund. This is also a way of honoring a club member with a Life Membership in WGCFF (\$50).

Each of these forms can be found on the WGCFF website. On the opening page of the website, click on “Forms”, and you will find Memorial Donation Form, Tribute Donation Form, and Scholarship Donation Form.

Wisconsin Garden Club Federation



709 Brookstone Crest
Mount Horeb, WI 53572

Non-Profit Org
US Postage
PAID
Permit No. 2783
Madison, WI

wisconsinclub.org

Deadline for Fall Issue: September 1 — Submissions Welcome
Publication approximately: October 1

Coming in the Fall 2019: Award Deadlines; Blue Star/Gold Star Markers; Endangered Species; Life Memberships; Horticulture; Scholarships. Articles also needed by Club Officers & members, please consider writing about your garden club, activities and club projects.

Looking out my window this morning, I am seeing the dew sparkling on the grass and I'm admiring the flowers which are already greeting the day. There are always those "unintentional" plants (aka, weeds) that have found their way among the flowers. On these cooler mornings, it would be a good time to be getting rid of the weeds, but first I need to complete this editorial and magazine, so I'd best just stay at the computer.



During the past few months, I have fallen behind on some tasks because of health issues. All is being dealt with, and I am feeling fine – just a few bumps in the road which have slowed me from getting this magazine to you on a timely basis. My apologies and I resolve to do a better job with the next issues.

As I have listened to various medical people, one comment has stuck with me – that we need to be willing to ask for assistance and then be willing to accept the help. Many of us view ourselves as "I can take care of this myself" kind of people because we've always been able to do so much for ourselves. Then come those moments because of broken bones, illness, or an accident, and we need to seek help. May we remember to have a good receiving spirit as others help us, just as we expect others to appreciate our help when it is offered.

Our state organization will be needing additional assistance in the upcoming year as we prepare to host the 2020 National Convention. You can read about the kinds of help that are needed by looking at the WGCFF website. On the opening page, click on "Perfect Vision 2020". Our state organization, your District and Club also need your help with various projects. Step up and volunteer for the type of tasks you like to do, instead of waiting to be assigned to something you may not enjoy.

And if you are wondering how you can help this editor, please continue to send news and photos about your club activities. If you enjoy photography, please let me know – your camera and eye for detail would be helpful for the 2020 Convention.

Carla

Editor:
Carla Von Haden
wisconsinclub.org@centurytel.net
1504 Academy St., Elroy 53929
920-901-3811

Circulation:
Susan Johansen
2249 122nd St.
New Richmond, WI 54017
h23j19@gmail.com

Contributors: Lynda Curl, Lynne Ehnert, Roger Greathead, Diane Hagler, Gerianne Holzman, Mary Jane Hull, Cheryl Lausten, Linda McCafferty, Liz Murken, Alyssa Nelson, Lynnette Rakun, Pat Ritchie, Char Schulze, Mary Ellen Sedlachek, Lucy Valitchka

Published quarterly at Elroy, WI by the Wisconsin Garden Club Federation, member of National Gardens Clubs, Inc. Subscription price \$10.00 per year.

Distribution: 1100

Editor reserves the right to edit contributions for size and content.
Printed by EconoPrint, Verona, WI